

Product datasheet for **TA356967**

ZNF160 Rabbit Polyclonal Antibody

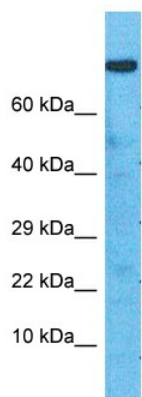
Product data:

Product Type:	Primary Antibodies
Applications:	WB
Reactivity:	Human
Host:	Rabbit
Clonality:	Polyclonal
Immunogen:	The immunogen is a synthetic peptide directed towards the N-terminal region of Human ZN160
Specificity:	Expected reactivity: Human
Formulation:	Liquid. Purified antibody supplied in 1x PBS buffer with 0.09% (w/v) sodium azide and 2% sucrose. <i>Note that this product is shipped as lyophilized powder to China customers.</i>
Concentration:	lot specific
Purification:	Affinity Purified
Conjugation:	Unconjugated
Storage:	For short term use, store at 2-8°C up to 1 week. For long term storage, store at -20°C in small aliquots to prevent freeze-thaw cycles.
Stability:	Shelf life: one year from despatch.
Predicted Protein Size:	89kDa
Gene Name:	zinc finger protein 160
Database Link:	XP_006723525 Entrez Gene 90338 Human Q9HCG1
Background:	The protein encoded by this gene is a Kruppel-related zinc finger protein which is characterized by the presence of an N-terminal repressor domain, the Kruppel-associated box (KRAB). The KRAB domain is a potent repressor of transcription; thus this protein may function in transcription regulation. Multiple transcript variants have been found for this gene.
Synonyms:	DKFZp686B16128; F11; FLJ00032; HKr18; HZF5; KIAA1611; KR18



[View online »](#)

Product images:



Host: Rabbit
Target Name: ZN160
Sample Tissue: Ovary Tumor Lysate
Antibody Dilution: 1.0 μ g/ml

Host: Rabbit
Target Name: ZN160
Sample Type: Ovary Tumor lysates
Antibody Dilution: 1.0ug/ml