

Product datasheet for **TA356964**

TTLL5 Rabbit Polyclonal Antibody

Product data:

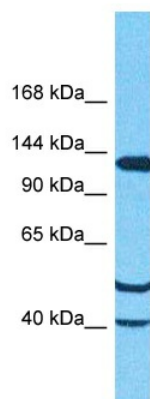
Product Type:	Primary Antibodies
Applications:	WB
Reactivity:	Human
Host:	Rabbit
Clonality:	Polyclonal
Immunogen:	The immunogen is a synthetic peptide directed towards the C-terminal region of Human TTLL5
Specificity:	Expected reactivity: Cow, Dog, Guinea Pig, Horse, Human, Pig, Rabbit Homology: Cow: 85%; Dog: 83%; Guinea Pig: 79%; Horse: 77%; Human: 100%; Pig: 90%; Rabbit: 83%
Formulation:	Liquid. Purified antibody supplied in 1x PBS buffer with 0.09% (w/v) sodium azide and 2% sucrose.
Concentration:	lot specific
Purification:	Affinity purified
Conjugation:	Unconjugated
Storage:	For short term use, store at 2-8°C up to 1 week. For long term storage, store at -20°C in small aliquots to prevent freeze-thaw cycles.
Stability:	Shelf life: one year from despatch.
Predicted Protein Size:	140kDa
Gene Name:	tubulin tyrosine ligase like 5
Database Link:	NP_055887 Entrez Gene 23093 Human Q6EMB2
Background:	This gene encodes a member of the tubulin tyrosine ligase like protein family. This protein interacts with two glucocorticoid receptor coactivators, transcriptional intermediary factor 2 and steroid receptor coactivator 1. This protein may function as a coregulator of glucocorticoid receptor mediated gene induction and repression. This protein may also function as an alpha tubulin polyglutamylase.



[View online »](#)

Synonyms: KIAA0998; MGC117189; STAMP

Product images:



Host: Rabbit
Target Name: TTLL5
Sample Tissue: NCI-H226 Cell Lysate
Antibody Dilution: 1.0µg/ml

Host: Rabbit
Target Name: TTLL5
Sample Type: NCI-H226 Whole Cell lysates
Antibody Dilution: 1.0ug/ml