

Product datasheet for **TA356961**

Emx1 Rabbit Polyclonal Antibody

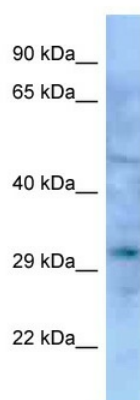
Product data:

Product Type:	Primary Antibodies
Applications:	WB
Reactivity:	Mouse
Host:	Rabbit
Clonality:	Polyclonal
Specificity:	Expected reactivity: Cow, Dog, Guinea Pig, Human, Mouse, Rabbit, Rat, Zebrafish Homology: Cow: 100%; Dog: 100%; Guinea Pig: 100%; Human: 100%; Mouse: 100%; Rabbit: 82%; Rat: 100%; Zebrafish: 79%
Formulation:	Liquid. Purified antibody supplied in 1x PBS buffer with 0.09% (w/v) sodium azide and 2% sucrose. <i>Note that this product is shipped as lyophilized powder to China customers.</i>
Concentration:	lot specific
Purification:	Affinity Purified
Conjugation:	Unconjugated
Storage:	For short term use, store at 2-8°C up to 1 week. For long term storage, store at -20°C in small aliquots to prevent freeze-thaw cycles.
Stability:	Shelf life: one year from despatch.
Predicted Protein Size:	28kDa
Gene Name:	empty spiracles homeobox 1
Database Link:	NP_034261 Entrez Gene 13796 Mouse Q04742
Background:	Emx1 is a rranscription factor, which in cooperation with EMX2, acts to generate the boundary between the roof and archipallium in the developing brain.It may function in combinations with OTX1/2 to specify cell fates in the developing central nervous system.
Synonyms:	EMX1



[View online »](#)

Product images:



WB Suggested Anti-Emx1 Antibody
Titration: 1.0 ug/ml
Positive Control: Mouse Pancreas