

Product datasheet for **TA356958**

Wasf2 Rabbit Polyclonal Antibody

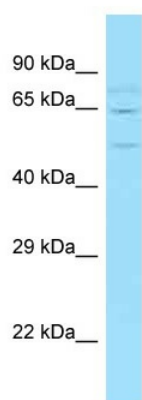
Product data:

Product Type:	Primary Antibodies
Applications:	WB
Reactivity:	Mouse
Host:	Rabbit
Clonality:	Polyclonal
Specificity:	Expected reactivity: Cow, Dog, Guinea Pig, Horse, Human, Mouse, Rabbit, Rat Homology: Cow: 86%; Dog: 79%; Guinea Pig: 86%; Horse: 86%; Human: 100%; Mouse: 100%; Rabbit: 85%; Rat: 100%
Formulation:	Liquid. Purified antibody supplied in 1x PBS buffer with 0.09% (w/v) sodium azide and 2% sucrose. <i>Note that this product is shipped as lyophilized powder to China customers.</i>
Concentration:	lot specific
Purification:	Affinity Purified
Conjugation:	Unconjugated
Storage:	For short term use, store at 2-8°C up to 1 week. For long term storage, store at -20°C in small aliquots to prevent freeze-thaw cycles.
Stability:	Shelf life: one year from despatch.
Predicted Protein Size:	55kDa
Gene Name:	WAS protein family, member 2
Database Link:	NP_700472 Entrez Gene 242687 Mouse Q8BH43
Background:	Wasf2 is a downstream effector molecule involved in the transmission of signals from tyrosine kinase receptors and small GTPases to the actin cytoskeleton. It promotes formation of actin filaments. Wasf2 is a part of the WAVE complex that regulates lamellipodia formation. The WAVE complex regulates actin filament reorganization via its interaction with the Arp2/3 complex.
Synonyms:	dj393P12.2; IMD2; OTTHUMP00000211879; SCAR2; WAVE2



[View online »](#)

Product images:



WB Suggested Anti-Wasf2 Antibody
Titration: 1.0 ug/ml
Positive Control: Mouse Thymus