

Product datasheet for **TA356957**

P2ry1 Rabbit Polyclonal Antibody

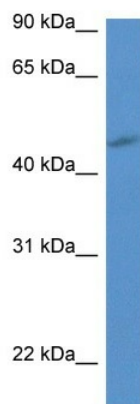
Product data:

Product Type:	Primary Antibodies
Applications:	WB
Reactivity:	Rat
Host:	Rabbit
Clonality:	Polyclonal
Specificity:	Expected reactivity: Cow, Guinea Pig, Horse, Human, Mouse, Rabbit, Rat Homology: Cow: 93%; Guinea Pig: 93%; Horse: 93%; Human: 100%; Mouse: 86%; Rabbit: 93%; Rat: 86%
Formulation:	Liquid. Purified antibody supplied in 1x PBS buffer with 0.09% (w/v) sodium azide and 2% sucrose. <i>Note that this product is shipped as lyophilized powder to China customers.</i>
Concentration:	lot specific
Purification:	Affinity Purified
Conjugation:	Unconjugated
Storage:	For short term use, store at 2-8°C up to 1 week. For long term storage, store at -20°C in small aliquots to prevent freeze-thaw cycles.
Stability:	Shelf life: one year from despatch.
Predicted Protein Size:	42kDa
Gene Name:	purinergic receptor P2Y1
Database Link:	NP_036932 Entrez Gene 25265 Rat P49651
Background:	P2ry1 is a G protein-coupled receptor for extracellular ATP; It plays a role in ischemic preconditioning (IPC) in heart.
Synonyms:	P2Y1



[View online »](#)

Product images:



WB Suggested Anti-P2ry1 Antibody
Titration: 1.0 ug/ml
Positive Control: Rat Liver