

Product datasheet for **TA356940**

PRDM6 Rabbit Polyclonal Antibody

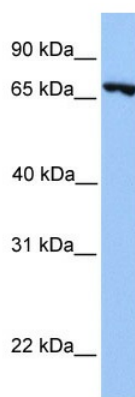
Product data:

| | |
|-------------------------|---|
| Product Type: | Primary Antibodies |
| Applications: | WB |
| Reactivity: | Human |
| Host: | Rabbit |
| Clonality: | Polyclonal |
| Immunogen: | The immunogen is a synthetic peptide directed towards the N terminal region of human PRDM6 |
| Specificity: | Expected reactivity: Human |
| Formulation: | Liquid. Purified antibody supplied in 1x PBS buffer with 0.09% (w/v) sodium azide and 2% sucrose. <i>Note that this product is shipped as lyophilized powder to China customers.</i> |
| Concentration: | lot specific |
| Purification: | Affinity Purified |
| Conjugation: | Unconjugated |
| Storage: | For short term use, store at 2-8°C up to 1 week. For long term storage, store at -20°C in small aliquots to prevent freeze-thaw cycles. |
| Stability: | Shelf life: one year from despatch. |
| Predicted Protein Size: | 67kDa |
| Gene Name: | PR domain 6 |
| Database Link: | XP_942846 Entrez Gene 93166 Human Q9NQX0 |
| Background: | PRDM6 contains 4 C2H2-type zinc fingers and 1 SET domain. PRDM6 may be involved in transcriptional regulation. |
| Synonyms: | PFM3 |



[View online »](#)

Product images:



WB Suggested Anti-PRDM6 Antibody Titration:
0.2-1 ug/ml
Positive Control: Jurkat cell lysate