

## Product datasheet for **TA356928**

### LOC441488 Rabbit Polyclonal Antibody

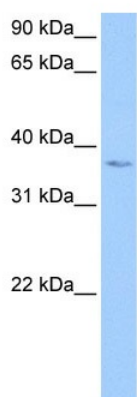
#### Product data:

Product Type:	Primary Antibodies
Applications:	WB
Reactivity:	Human
Host:	Rabbit
Clonality:	Polyclonal
Immunogen:	The immunogen is a synthetic peptide directed towards the N terminal region of human hCG_1982709
Specificity:	<b>Expected reactivity:</b> Cow, Dog, Guinea Pig, Horse, Human, Mouse, Rabbit, Rat <b>Homology:</b> Cow: 86%; Dog: 86%; Guinea Pig: 79%; Horse: 79%; Human: 93%; Mouse: 86%; Rabbit: 86%; Rat: 79%
Formulation:	Liquid. Purified antibody supplied in 1x PBS buffer with 0.09% (w/v) sodium azide and 2% sucrose.
Concentration:	lot specific
Purification:	Affinity Purified
Conjugation:	Unconjugated
Storage:	For short term use, store at 2-8°C up to 1 week. For long term storage, store at -20°C in small aliquots to prevent freeze-thaw cycles.
Stability:	Shelf life: one year from despatch.
Predicted Protein Size:	45kDa
Database Link:	<a href="#">XP_497098</a> <a href="#">Entrez Gene 441488</a>
Background:	The exact function of hCG_1982709 remains unknown.



[View online »](#)

## Product images:



WB Suggested Anti-hCG\_1982709 Antibody  
 Titration: 0.2-1 ug/ml  
 Positive Control: 721\_B cell lysate