

## Product datasheet for **TA356918**

### FOXI3 Rabbit Polyclonal Antibody

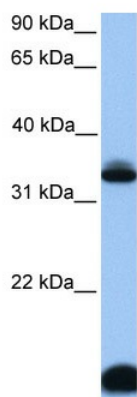
#### Product data:

Product Type:	Primary Antibodies
Applications:	WB
Reactivity:	Human
Host:	Rabbit
Clonality:	Polyclonal
Immunogen:	The immunogen is a synthetic peptide directed towards the middle region of human LOC344167
Specificity:	<b>Expected reactivity:</b> Human <b>Homology:</b> Human: 100%
Formulation:	Liquid. Purified antibody supplied in 1x PBS buffer with 0.09% (w/v) sodium azide and 2% sucrose.
Concentration:	lot specific
Purification:	Affinity Purified
Conjugation:	Unconjugated
Storage:	For short term use, store at 2-8°C up to 1 week. For long term storage, store at -20°C in small aliquots to prevent freeze-thaw cycles.
Stability:	Shelf life: one year from despatch.
Predicted Protein Size:	41kDa
Gene Name:	forkhead box I3
Database Link:	<a href="#">XP_001126001</a> <a href="#">Entrez Gene 344167 Human</a> <a href="#">A8MTJ6</a>
Background:	The exact function of LOC344167 remains unknown.
Synonyms:	RGD1561816



[View online »](#)

Product images:



WB Suggested Anti-FOX13 Antibody Titration: 0.2-1 ug/ml  
Positive Control: HepG2 cell lysate