

Product datasheet for **TA356917**

NOTO Rabbit Polyclonal Antibody

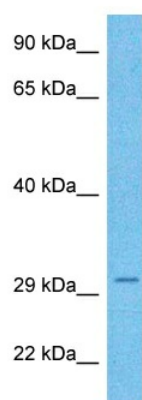
Product data:

Product Type:	Primary Antibodies
Applications:	WB
Reactivity:	Human
Host:	Rabbit
Clonality:	Polyclonal
Immunogen:	The immunogen is a synthetic peptide directed towards the C-terminal region of Human NOTO
Specificity:	Expected reactivity: Human
Formulation:	Liquid. Purified antibody supplied in 1x PBS buffer with 0.09% (w/v) sodium azide and 2% sucrose.
Concentration:	lot specific
Purification:	Affinity purified
Conjugation:	Unconjugated
Storage:	For short term use, store at 2-8°C up to 1 week. For long term storage, store at -20°C in small aliquots to prevent freeze-thaw cycles.
Stability:	Shelf life: one year from despatch.
Predicted Protein Size:	27kDa
Gene Name:	notochord homeobox
Database Link:	NP_001127934 Entrez Gene 344022 Human A8MTQ0
Background:	NOTO is a transcription regulator acting downstream of both FOXA2 and T during notochord development. It is required for node morphogenesis. It is essential for cilia formation in the posterior notochord (PNC) and for left-right patterning; it acts upstream of FOXJ1 and RFX3 in this process and is required for the expression of various components important for axonemal assembly and function. And it plays a role in regulating axial versus paraxial cell fate (By similarity).
Synonyms:	Noto



[View online »](#)

Product images:



Host: Rabbit
Target Name: NOTO
Sample Tissue: Ovary Tumor Lysate
Antibody Dilution: 1.0µg/ml

Host: Rabbit
Target Name: NOTO
Sample Type: Ovary Tumor lysates
Antibody Dilution: 1.0ug/ml