

Product datasheet for **TA356893**

MAGED4 Rabbit Polyclonal Antibody

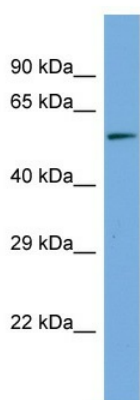
Product data:

Product Type:	Primary Antibodies
Applications:	WB
Reactivity:	Human
Host:	Rabbit
Clonality:	Polyclonal
Immunogen:	The immunogen is a synthetic peptide directed towards the middle region of human MAGED4
Specificity:	Expected reactivity: Cow, Dog, Goat, Guinea Pig, Horse, Human, Mouse, Rabbit, Rat Homology: Cow: 100%; Dog: 100%; Goat: 77%; Guinea Pig: 100%; Horse: 100%; Human: 100%; Mouse: 93%; Rabbit: 100%; Rat: 100%
Formulation:	Liquid. Purified antibody supplied in 1x PBS buffer with 0.09% (w/v) sodium azide and 2% sucrose.
Concentration:	lot specific
Purification:	Affinity Purified
Conjugation:	Unconjugated
Storage:	For short term use, store at 2-8°C up to 1 week. For long term storage, store at -20°C in small aliquots to prevent freeze-thaw cycles.
Stability:	Shelf life: one year from despatch.
Predicted Protein Size:	57kDa
Gene Name:	MAGE family member D4
Database Link:	NP_001092270.1 Entrez Gene 728239 Human Q96JG8
Synonyms:	FLJ39060; KIAA1859; MAGE-E1; MAGE1; MAGED4A; MAGEE1; MGC3210



[View online »](#)

Product images:



Host: Rabbit
 Target Name: MAGED2
 Sample Type: HeLa Whole Cell lysates
 Antibody Dilution: 1.0ug/ml