

## Product datasheet for TA356885

### Scratch 2 (SCRT2) Rabbit Polyclonal Antibody

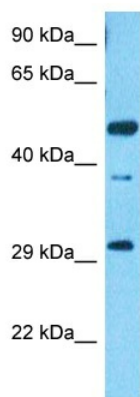
#### Product data:

|                         |   |
|-------------------------|---|
| Product Type:           | Primary Antibodies  |
| Applications:           | WB  |
| Reactivity:             | Human   |
| Host:                   | Rabbit  |
| Clonality:              | Polyclonal  |
| Immunogen:              | The immunogen is a synthetic peptide directed towards the N-terminal region of Human SCRT2  |
| Specificity:            | <b>Expected reactivity:</b> Guinea Pig, Human, Mouse, Rabbit, Rat<br><b>Homology:</b> Guinea Pig: 93%; Human: 100%; Mouse: 93%; Rabbit: 100%; Rat: 93%                                  |
| Formulation:            | Liquid. Purified antibody supplied in 1x PBS buffer with 0.09% (w/v) sodium azide and 2% sucrose.<br><i>Note that this product is shipped as lyophilized powder to China customers.</i> |
| Concentration:          | lot specific  |
| Purification:           | Affinity purified   |
| Conjugation:            | Unconjugated  |
| Storage:                | For short term use, store at 2-8°C up to 1 week. For long term storage, store at -20°C in small aliquots to prevent freeze-thaw cycles.   |
| Stability:              | Shelf life: one year from despatch.   |
| Predicted Protein Size: | 33kDa   |
| Gene Name:              | scratch family transcriptional repressor 2  |
| Database Link:          | <a href="#">NP_149120</a><br><a href="#">Entrez Gene 85508 Human</a><br><a href="#">Q9NQ03</a>  |
| Background:             | SCRT2 may be involved in transcriptional regulation.  |
| Synonyms:               | SCRT2   |



[View online »](#)

## Product images:



Host: Rabbit  
Target Name: SCRT2  
Sample Tissue: HCT116 Cell Lysate  
Antibody Dilution: 1.0 $\mu$ g/ml

Host: Rabbit  
Target Name: SCRT2  
Sample Type: HCT116 Whole Cell lysates  
Antibody Dilution: 1.0ug/ml