

## Product datasheet for **TA356884**

### TCEAL5 Rabbit Polyclonal Antibody

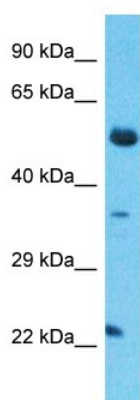
#### Product data:

Product Type:	Primary Antibodies
Applications:	WB
Reactivity:	Human
Host:	Rabbit
Clonality:	Polyclonal
Immunogen:	The immunogen is a synthetic peptide directed towards the middle region of Human TCEAL5
Specificity:	<b>Expected reactivity:</b> Dog, Guinea Pig, Horse, Human, Mouse, Rabbit, Rat <b>Homology:</b> Dog: 100%; Guinea Pig: 93%; Horse: 100%; Human: 100%; Mouse: 93%; Rabbit: 93%; Rat: 93%
Formulation:	Liquid. Purified antibody supplied in 1x PBS buffer with 0.09% (w/v) sodium azide and 2% sucrose.
Concentration:	lot specific
Purification:	Affinity Purified
Conjugation:	Unconjugated
Storage:	For short term use, store at 2-8°C up to 1 week. For long term storage, store at -20°C in small aliquots to prevent freeze-thaw cycles.
Stability:	Shelf life: one year from despatch.
Predicted Protein Size:	22kDa
Gene Name:	transcription elongation factor A like 5
Database Link:	<a href="#">NP_001012997</a> <a href="#">Entrez Gene 340543 Human</a> <a href="#">Q5H9L2</a>
Background:	This gene, which is located on the X chromosome, encodes a protein which contains a BEX (brain expressed X-linked like family) domain. This domain is found in proteins encoded by the TCEAL elongation factor (transcription elongation factor A (SII)-like) gene family also located on the X chromosome. The coding region for this gene is located entirely in the terminal exon.
Synonyms:	Tceal5



[View online »](#)

## Product images:



Host: Rabbit  
Target Name: TCEAL5  
Sample Tissue: Thymus Tumor Lysate  
Antibody Dilution: 1.0µg/ml

Host: Rabbit  
Target Name: TCEAL5  
Sample Type: Thymus Tumor lysates  
Antibody Dilution: 1.0ug/ml