

Product datasheet for **TA356882**

Plekhf2 Rabbit Polyclonal Antibody

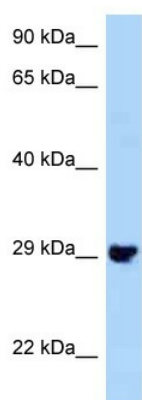
Product data:

Product Type:	Primary Antibodies
Applications:	WB
Reactivity:	Mouse
Host:	Rabbit
Clonality:	Polyclonal
Specificity:	Expected reactivity: Cow, Guinea Pig, Horse, Human, Mouse, Rabbit, Rat Homology: Cow: 93%; Guinea Pig: 93%; Horse: 93%; Human: 100%; Mouse: 100%; Rabbit: 100%; Rat: 100%
Formulation:	Liquid. Purified antibody supplied in 1x PBS buffer with 0.09% (w/v) sodium azide and 2% sucrose. <i>Note that this product is shipped as lyophilized powder to China customers.</i>
Concentration:	lot specific
Purification:	Affinity Purified
Conjugation:	Unconjugated
Storage:	For short term use, store at 2-8°C up to 1 week. For long term storage, store at -20°C in small aliquots to prevent freeze-thaw cycles.
Stability:	Shelf life: one year from despatch.
Predicted Protein Size:	28kDa
Gene Name:	pleckstrin homology domain containing, family F (with FYVE domain) member 2
Database Link:	NP_780384 Entrez Gene 71801 Mouse Q91WB4
Background:	The function of this protein remains unknown.
Synonyms:	FLJ13187; Phafin-2; PHAFIN2; ZFYVE18



[View online »](#)

Product images:



WB Suggested Anti-Plekhf2 Antibody
 Titration: 1.0 ug/ml
 Positive Control: Mouse Kidney