

## Product datasheet for **TA356879**

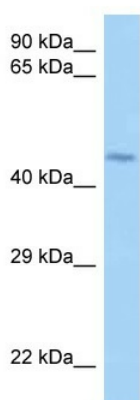
### LRRFIP2 Rabbit Polyclonal Antibody

#### Product data:

Product Type:	Primary Antibodies
Applications:	WB
Reactivity:	Human
Host:	Rabbit
Clonality:	Polyclonal
Specificity:	<b>Expected reactivity:</b> Cow, Dog, Guinea Pig, Horse, Human, Mouse, Pig, Rabbit, Rat, Yeast, Zebrafish <b>Homology:</b> Cow: 100%; Dog: 100%; Guinea Pig: 92%; Horse: 100%; Human: 100%; Mouse: 100%; Pig: 100%; Rabbit: 100%; Rat: 100%; Yeast: 80%; Zebrafish: 92%
Formulation:	Liquid. Purified antibody supplied in 1x PBS buffer with 0.09% (w/v) sodium azide and 2% sucrose. <i>Note that this product is shipped as lyophilized powder to China customers.</i>
Concentration:	lot specific
Purification:	Affinity Purified
Conjugation:	Unconjugated
Storage:	For short term use, store at 2-8°C up to 1 week. For long term storage, store at -20°C in small aliquots to prevent freeze-thaw cycles.
Stability:	Shelf life: one year from despatch.
Predicted Protein Size:	45kDa
Gene Name:	leucine rich repeat (in FLII) interacting protein 2
Database Link:	<a href="#">NP_060194</a> <a href="#">Entrez Gene 9209 Human</a> <a href="#">Q9Y608-2</a>
Background:	The function of LRRFIP2 remains unknown.
Synonyms:	DKFZp434H2035; FLJ20248; FLJ22683; FLJ58304; HUF1-2; OTTHUMP00000161359; OTTHUMP00000208872



[View online »](#)

**Product images:**

WB Suggested Anti-LRRFIP2 Antibody  
Titration: 1.0 ug/ml  
Positive Control: Jurkat Whole Cell LRRFIP2 is supported by BioGPS gene expression data to be expressed in Jurkat