

## Product datasheet for **TA356876**

### Senp6 Rabbit Polyclonal Antibody

#### Product data:

Product Type:	Primary Antibodies
Applications:	WB
Reactivity:	Mouse
Host:	Rabbit
Clonality:	Polyclonal
Specificity:	<b>Expected reactivity:</b> Cow, Dog, Horse, Human, Mouse, Pig, Rabbit, Rat <b>Homology:</b> Cow: 100%; Dog: 100%; Horse: 100%; Human: 100%; Mouse: 100%; Pig: 100%; Rabbit: 100%; Rat: 100%
Formulation:	Liquid. Purified antibody supplied in 1x PBS buffer with 0.09% (w/v) sodium azide and 2% sucrose. <i>Note that this product is shipped as lyophilized powder to China customers.</i>
Concentration:	lot specific
Purification:	Affinity Purified
Conjugation:	Unconjugated
Storage:	For short term use, store at 2-8°C up to 1 week. For long term storage, store at -20°C in small aliquots to prevent freeze-thaw cycles.
Stability:	Shelf life: one year from despatch.
Predicted Protein Size:	127kDa
Gene Name:	SUMO/sentrin specific peptidase 6
Database Link:	<a href="#">NP_666115</a> <a href="#">Entrez Gene 215351 Mouse</a> <a href="#">Q6P7W0</a>



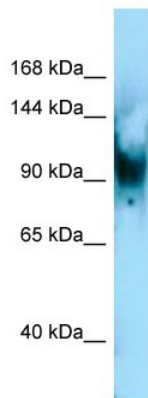
[View online »](#)

**Background:**

Senp6 is a protease that deconjugates SUMO1, SUMO2 and SUMO3 from targeted proteins. Senp6 processes preferentially poly-SUMO2 and poly-SUMO3 chains, but does not efficiently process SUMO1, SUMO2 and SUMO3 precursors. Senp6 deconjugates SUMO1 from RXRA, leading to transcriptional activation. Senp6 is involved in chromosome alignment and spindle assembly, by regulating the kinetochore CENPH-CENPI-CENPK complex. Senp6 desumoylates PML and CENPI, protecting them from degradation by the ubiquitin ligase RNF4, which targets polysumoylated proteins for proteasomal degradation and desumoylates also RPA1, thus preventing recruitment of RAD51 to the DNA damage foci to initiate DNA repair through homologous recombination.

**Synonyms:**

2810017C20Rik; FLJ11355; FLJ11887; KIAA0389; KIAA0797; SSP1; SUSP1

**Product images:**

Host: Rabbit  
Target Name: Senp6  
Antibody Dilution: 1.0ug/ml  
Sample Type: Mouse Lung