

## Product datasheet for **TA356873**

### AIM2 Rabbit Polyclonal Antibody

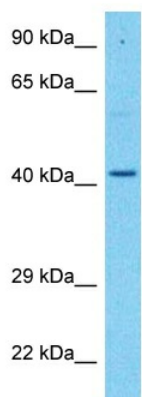
#### Product data:

Product Type:	Primary Antibodies
Applications:	WB
Reactivity:	Human
Host:	Rabbit
Clonality:	Polyclonal
Immunogen:	The immunogen is a synthetic peptide directed towards the C-terminal region of Human AIM2
Specificity:	<b>Expected reactivity:</b> Horse, Human <b>Homology:</b> Horse: 83%; Human: 100%
Formulation:	Liquid. Purified antibody supplied in 1x PBS buffer with 0.09% (w/v) sodium azide and 2% sucrose. <i>Note that this product is shipped as lyophilized powder to China customers.</i>
Concentration:	lot specific
Purification:	Affinity purified
Conjugation:	Unconjugated
Storage:	For short term use, store at 2-8°C up to 1 week. For long term storage, store at -20°C in small aliquots to prevent freeze-thaw cycles.
Stability:	Shelf life: one year from despatch.
Predicted Protein Size:	37kDa
Gene Name:	absent in melanoma 2
Database Link:	<a href="#">NP_004824</a> <a href="#">Entrez Gene 9447 Human</a> <a href="#">O14862</a>
Background:	AIM2 is a member of the IFI20X /IFI16 family. It plays a putative role in tumorigenic reversion and may control cell proliferation. Interferon-gamma induces expression of AIM2.
Synonyms:	PYHIN4



[View online »](#)

Product images:



Host: Rabbit  
Target Name: AIM2  
Sample Tissue: Fetal Liver Lysate  
Antibody Dilution: 1.0 $\mu$ g/ml

Host: Rabbit  
Target Name: AIM2  
Sample Type: Fetal Liver lysates  
Antibody Dilution: 1.0 $\mu$ g/ml