

Product datasheet for **TA356869**

SKOR1 Rabbit Polyclonal Antibody

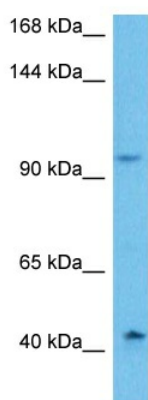
Product data:

Product Type:	Primary Antibodies
Applications:	WB
Reactivity:	Human
Host:	Rabbit
Clonality:	Polyclonal
Immunogen:	The immunogen is a synthetic peptide directed towards the n terminal region of human SKOR1
Specificity:	Expected reactivity: Human
Formulation:	Liquid. Purified antibody supplied in 1x PBS buffer with 0.09% (w/v) sodium azide and 2% sucrose.
Concentration:	lot specific
Purification:	Affinity purified
Conjugation:	Unconjugated
Storage:	For short term use, store at 2-8°C up to 1 week. For long term storage, store at -20°C in small aliquots to prevent freeze-thaw cycles.
Stability:	Shelf life: one year from despatch.
Predicted Protein Size:	101 kDa
Gene Name:	SKI family transcriptional corepressor 1
Database Link:	NP_001026977.1 Entrez Gene 390598 Human P84550-3
Background:	Acts as a transcriptional corepressor of LBX1 (By similarity). Inhibits BMP signaling.
Synonyms:	AV273001; C230094B15Rik; Corl1; Lbxcor1



[View online »](#)

Product images:



Host: Rabbit
Target Name: SKOR1
Sample Type: HT1080 Cell Lysate
Antibody Dilution: 1.0 μ g/ml

Host: Rabbit
Target Name: SKOR1
Sample Tissue: Human HT1080 Whole Cell lysates
Antibody Dilution: 1 μ g/ml