

## Product datasheet for **TA356865**

### Cytochrome b (CYTB) Rabbit Polyclonal Antibody

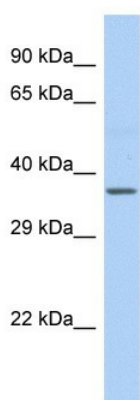
#### Product data:

Product Type:	Primary Antibodies
Applications:	WB
Reactivity:	Human
Host:	Rabbit
Clonality:	Polyclonal
Immunogen:	The immunogen is a synthetic peptide directed towards the C-terminal region of human MT-CYB
Specificity:	<b>Expected reactivity:</b> Human <b>Homology:</b> Human: 100%
Formulation:	Liquid. Purified antibody supplied in 1x PBS buffer with 0.09% (w/v) sodium azide and 2% sucrose.
Concentration:	lot specific
Purification:	Affinity Purified
Conjugation:	Unconjugated
Storage:	For short term use, store at 2-8°C up to 1 week. For long term storage, store at -20°C in small aliquots to prevent freeze-thaw cycles.
Stability:	Shelf life: one year from despatch.
Predicted Protein Size:	41kDa
Gene Name:	mitochondrially encoded cytochrome b
Database Link:	<a href="#">YP_003024038.1</a> <a href="#">Entrez Gene 4519 Human P00156</a>

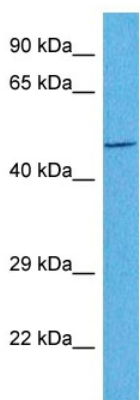


[View online »](#)

Product images:



Host: Rabbit  
 Target Name: cytb  
 Sample Type: Fetal Liver lysates  
 Antibody Dilution: 1.0ug/ml



Host: Rabbit  
 Target Name: CYTB  
 Sample Type: OVCAR-3 Cell Lysate  
 Antibody Dilution: 1.0µg/ml

Host: Rabbit  
 Target Name: CYTB  
 Sample Tissue: Human OVCAR-3 Whole Cell  
 Antibody Dilution: 1ug/ml