

Product datasheet for **TA356863**

Cytochrome b (CYTB) Rabbit Polyclonal Antibody

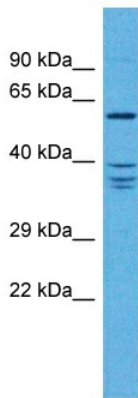
Product data:

Product Type:	Primary Antibodies
Applications:	WB
Reactivity:	Human
Host:	Rabbit
Clonality:	Polyclonal
Immunogen:	The immunogen is a synthetic peptide directed towards the N terminal region of human CYTB
Specificity:	Expected reactivity: Human, Mouse, Rat Homology: Human: 100%; Mouse: 100%; Rat: 100%
Formulation:	Liquid. Purified antibody supplied in 1x PBS buffer with 0.09% (w/v) sodium azide and 2% sucrose. <i>Note that this product is shipped as lyophilized powder to China customers.</i>
Concentration:	lot specific
Purification:	Affinity Purified
Conjugation:	Unconjugated
Storage:	For short term use, store at 2-8°C up to 1 week. For long term storage, store at -20°C in small aliquots to prevent freeze-thaw cycles.
Stability:	Shelf life: one year from despatch.
Predicted Protein Size:	42kDa
Gene Name:	mitochondrially encoded cytochrome b
Database Link:	NP_536855 Entrez Gene 4519 Human P00156
Background:	CYTB belongs to the cytochrome b family. It is a component of the ubiquinol-cytochrome c reductase complex (complex III or cytochrome b-c1 complex), which is a respiratory chain that generates an electrochemical potential coupled to ATP synthesis.



[View online »](#)

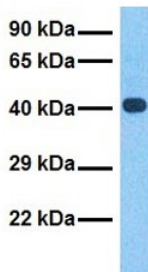
Product images:



Host: Rabbit
Target Name: CYTB
Sample Type: MCF7 Cell Lysate
Antibody Dilution: 1.0µg/ml

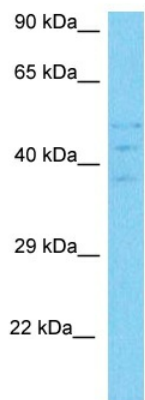
Host: Rabbit
Target Name: CYTB
Sample Tissue: Human MCF7 Whole Cell
Antibody Dilution: 1ug/ml

CYTB



Host: Rabbit
Target Name: CYTB
Sample Type: Human Fetal Liver
Antibody Dilution: 1ug/ml

Host: Rabbit
Target Name: CYTB
Sample Tissue: Human Fetal Liver
Antibody Dilution: 1.0ug/ml



Host: Rabbit
Target Name: CYTB
Sample Type: OVCAR-3 Cell Lysate
Antibody Dilution: 1.0 μ g/ml

Host: Rabbit
Target Name: CYTB
Sample Tissue: Human OVCAR-3 Whole Cell
Antibody Dilution: 1 μ g/ml