

Product datasheet for **TA356852**

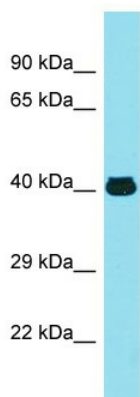
MFSD2A Rabbit Polyclonal Antibody

Product data:

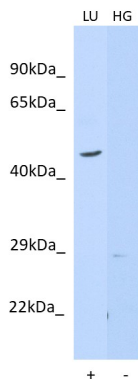
Product Type:	Primary Antibodies
Applications:	WB
Reactivity:	Human
Host:	Rabbit
Clonality:	Polyclonal
Immunogen:	The immunogen is a synthetic peptide directed towards the N-terminal region of human MFSD2A
Specificity:	Expected reactivity: Cow, Dog, Guinea Pig, Horse, Human, Mouse, Rabbit, Rat, Zebrafish Homology: Cow: 93%; Dog: 93%; Guinea Pig: 93%; Horse: 93%; Human: 100%; Mouse: 93%; Rabbit: 86%; Rat: 93%; Zebrafish: 93%
Formulation:	Liquid. Purified antibody supplied in 1x PBS buffer with 0.09% (w/v) sodium azide and 2% sucrose. <i>Note that this product is shipped as lyophilized powder to China customers.</i>
Concentration:	lot specific
Purification:	Affinity Purified
Conjugation:	Unconjugated
Storage:	For short term use, store at 2-8°C up to 1 week. For long term storage, store at -20°C in small aliquots to prevent freeze-thaw cycles.
Stability:	Shelf life: one year from despatch.
Predicted Protein Size:	41kDa
Gene Name:	major facilitator superfamily domain containing 2A
Database Link:	NP_001274737.1 Entrez Gene 84879 Human E7EPI8
Synonyms:	1700018O18Rik; Mfsd2; RGD1310174
Protein Families:	Transmembrane



[View online »](#)

Product images:


Host: Rabbit
 Target Name: MFSD2A
 Sample Type: Thyroid Tumor lysates
 Antibody Dilution: 1.0ug/ml



Host: Rabbit
 Target name: MFSD2A
 Positive control: ~25ug Human Lung (LU)
 Negative control: ~25ug HepG2 Cell Lysate (HG)
 Antibody concentration: 1ug/ml

Host: Rabbit
 Target: MFSD2A
 Positive control (+): Human lung (LU)
 Negative control (-): HepG2 (HG)
 Antibody concentration: 1 ug/ml