

Product datasheet for **TA356846**

DSEL Rabbit Polyclonal Antibody

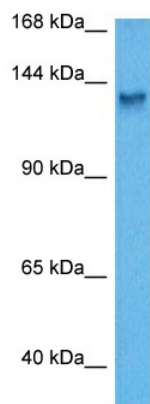
Product data:

Product Type:	Primary Antibodies
Applications:	WB
Reactivity:	Human
Host:	Rabbit
Clonality:	Polyclonal
Immunogen:	The immunogen is a synthetic peptide directed towards the C terminal region of human DSEL
Specificity:	Expected reactivity: Human Homology: Cow: 79%; Dog: 86%; Human: 100%; Rabbit: 86%; Rat: 83%
Formulation:	Liquid. Purified antibody supplied in 1x PBS buffer with 0.09% (w/v) sodium azide and 2% sucrose.
Concentration:	lot specific
Purification:	Affinity purified
Conjugation:	Unconjugated
Storage:	For short term use, store at 2-8°C up to 1 week. For long term storage, store at -20°C in small aliquots to prevent freeze-thaw cycles.
Stability:	Shelf life: one year from despatch.
Predicted Protein Size:	133 kDa
Gene Name:	dermatan sulfate epimerase-like
Database Link:	NP_115536 Entrez Gene 92126 Human Q8IZU8
Background:	The function of this protein remains unknown.
Synonyms:	C18orf4; FLJ11477; NCAG1



[View online »](#)

Product images:



Host: Rabbit
Target Name: DSEL
Sample Type: HepG2 Cell Lysate
Antibody Dilution: 1.0µg/ml

Host: Rabbit
Target Name: DSEL
Sample Tissue: Human HepG2 Whole Cell lysates
Antibody Dilution: 3ug/ml