

## Product datasheet for **TA356844**

### **TMEM49 (VMP1) Rabbit Polyclonal Antibody**

#### **Product data:**

Product Type:	Primary Antibodies
Applications:	WB
Reactivity:	Human
Host:	Rabbit
Clonality:	Polyclonal
Immunogen:	The immunogen is a synthetic peptide directed towards the middle region of Human VMP1
Specificity:	<b>Expected reactivity:</b> Cow, Dog, Guinea Pig, Horse, Human, Mouse, Rabbit, Rat, Yeast, Zebrafish <b>Homology:</b> Cow: 100%; Dog: 100%; Guinea Pig: 100%; Horse: 100%; Human: 100%; Mouse: 100%; Rabbit: 93%; Rat: 100%; Yeast: 80%; Zebrafish: 79%
Formulation:	Liquid. Purified antibody supplied in 1x PBS buffer with 0.09% (w/v) sodium azide and 2% sucrose. <i>Note that this product is shipped as lyophilized powder to China customers.</i>
Concentration:	lot specific
Purification:	Affinity purified
Conjugation:	Unconjugated
Storage:	For short term use, store at 2-8°C up to 1 week. For long term storage, store at -20°C in small aliquots to prevent freeze-thaw cycles.
Stability:	Shelf life: one year from despatch.
Predicted Protein Size:	44kDa
Gene Name:	vacuole membrane protein 1
Database Link:	<a href="#">NP_112200</a> <a href="#">Entrez Gene 81671 Human</a> <a href="#">Q96GC9</a>



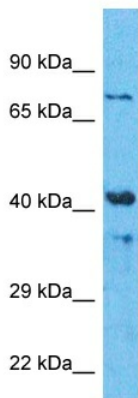
[View online »](#)

**Background:**

VMP1 is a stress-induced protein that, when overexpressed, promotes formation of intracellular vacuoles followed by cell death. It may be involved in the cytoplasmic vacuolization of acinar cells during the early stage of acute pancreatitis. And it plays a role in the initial stages of the autophagic process through its interaction with BECN1 (By similarity). It involved in cell-cell adhesion. It plays an essential role in formation of cell junctions.

**Synonyms:**

EPG3; TANGO5; TMEM49

**Product images:**

Host: Rabbit  
Target Name: VMP1  
Sample Tissue: HepG2 Cell Lysate  
Antibody Dilution: 1.0µg/ml

Host: Rabbit  
Target Name: VMP1  
Sample Type: HepG2 Whole Cell lysates  
Antibody Dilution: 1.0ug/ml