

## Product datasheet for **TA356838**

### Zdhhc11 Rabbit Polyclonal Antibody

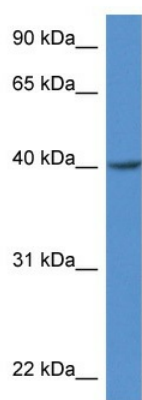
#### Product data:

Product Type:	Primary Antibodies
Applications:	WB
Reactivity:	Rat
Host:	Rabbit
Clonality:	Polyclonal
Specificity:	<b>Expected reactivity:</b> Dog, Guinea Pig, Horse, Human, Mouse, Rabbit, Rat, Zebrafish <b>Homology:</b> Dog: 79%; Guinea Pig: 86%; Horse: 93%; Human: 100%; Mouse: 86%; Rabbit: 75%; Rat: 93%; Zebrafish: 83%
Formulation:	Liquid. Purified antibody supplied in 1x PBS buffer with 0.09% (w/v) sodium azide and 2% sucrose.
Concentration:	lot specific
Purification:	Affinity Purified
Conjugation:	Unconjugated
Storage:	For short term use, store at 2-8°C up to 1 week. For long term storage, store at -20°C in small aliquots to prevent freeze-thaw cycles.
Stability:	Shelf life: one year from despatch.
Predicted Protein Size:	40kDa
Gene Name:	zinc finger, DHHC-type containing 11
Database Link:	<a href="#">NP_001034431</a> <a href="#">Entrez Gene 499000 Rat Q2TGJ8</a>
Background:	The function of this protein remains unknown.
Synonyms:	DHHC-11; FLJ13153; ZNF399



[View online »](#)

Product images:



WB Suggested Anti-Zdhhc11 Antibody  
Titration: 1.0 ug/ml  
Positive Control: Rat Muscle