

Product datasheet for **TA356835**

ARMH3 Rabbit Polyclonal Antibody

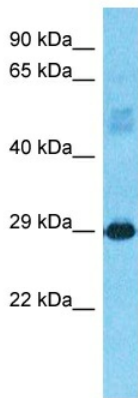
Product data:

Product Type:	Primary Antibodies
Applications:	WB
Reactivity:	Human
Host:	Rabbit
Clonality:	Polyclonal
Immunogen:	The immunogen is a synthetic peptide directed towards the C-terminal region of Human CJ076
Specificity:	Expected reactivity: Dog, Horse, Human, Mouse, Pig, Rabbit, Rat, Zebrafish Homology: Dog: 100%; Horse: 100%; Human: 100%; Mouse: 100%; Pig: 100%; Rabbit: 100%; Rat: 100%; Zebrafish: 93%
Formulation:	Liquid. Purified antibody supplied in 1x PBS buffer with 0.09% (w/v) sodium azide and 2% sucrose. <i>Note that this product is shipped as lyophilized powder to China customers.</i>
Concentration:	lot specific
Purification:	Affinity purified
Conjugation:	Unconjugated
Storage:	For short term use, store at 2-8°C up to 1 week. For long term storage, store at -20°C in small aliquots to prevent freeze-thaw cycles.
Stability:	Shelf life: one year from despatch.
Predicted Protein Size:	29kDa
Gene Name:	chromosome 10 open reading frame 76
Database Link:	Entrez Gene 79591 Human Q5T2E6-2
Synonyms:	FLJ13114; MGC125927



[View online »](#)

Product images:



Host: Rabbit
Target Name: CJ076
Sample Tissue: Fetal Liver Lysate
Antibody Dilution: 1.0 μ g/ml

Host: Rabbit
Target Name: CJ076
Sample Type: Fetal Liver lysates
Antibody Dilution: 1.0 μ g/ml