

Product datasheet for **TA356827**

Atl2 Rabbit Polyclonal Antibody

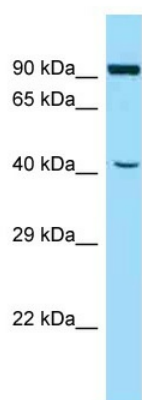
Product data:

Product Type:	Primary Antibodies
Applications:	WB
Reactivity:	Mouse
Host:	Rabbit
Clonality:	Polyclonal
Specificity:	Expected reactivity: Cow, Dog, Guinea Pig, Horse, Human, Mouse, Rabbit, Rat, Zebrafish Homology: Cow: 100%; Dog: 100%; Guinea Pig: 100%; Horse: 100%; Human: 100%; Mouse: 100%; Rabbit: 100%; Rat: 100%; Zebrafish: 77%
Formulation:	Liquid. Purified antibody supplied in 1x PBS buffer with 0.09% (w/v) sodium azide and 2% sucrose.
Concentration:	lot specific
Purification:	Affinity Purified
Conjugation:	Unconjugated
Storage:	For short term use, store at 2-8°C up to 1 week. For long term storage, store at -20°C in small aliquots to prevent freeze-thaw cycles.
Stability:	Shelf life: one year from despatch.
Predicted Protein Size:	47kDa
Gene Name:	atlastin GTPase 2
Database Link:	NP_835151 Entrez Gene 56298 Mouse E9QND8
Background:	The function of this protein is unknown.
Synonyms:	Aip-2; ARL3IP2; ARL6IP2; atlastin2; FLJ23293



[View online »](#)

Product images:



WB Suggested Anti-AtI2 Antibody
Titration: 1.0 ug/ml
Positive Control: Mouse Pancreas