

Product datasheet for **TA356824**

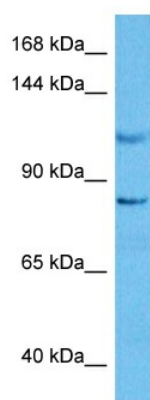
CLSTN2 Rabbit Polyclonal Antibody

Product data:

Product Type:	Primary Antibodies
Applications:	WB
Reactivity:	Human
Host:	Rabbit
Clonality:	Polyclonal
Immunogen:	The immunogen is a synthetic peptide directed towards the n terminal region of human CLSTN2
Specificity:	Expected reactivity: Human Homology: Cow: 100%; Dog: 93%; Guinea Pig: 93%; Horse: 100%; Human: 100%; Mouse: 100%; Pig: 100%; Rabbit: 100%; Rat: 93%
Formulation:	Liquid. Purified antibody supplied in 1x PBS buffer with 0.09% (w/v) sodium azide and 2% sucrose. <i>Note that this product is shipped as lyophilized powder to China customers.</i>
Concentration:	lot specific
Purification:	Affinity purified
Conjugation:	Unconjugated
Storage:	For short term use, store at 2-8°C up to 1 week. For long term storage, store at -20°C in small aliquots to prevent freeze-thaw cycles.
Stability:	Shelf life: one year from despatch.
Predicted Protein Size:	107 kDa
Gene Name:	calsyntenin 2
Database Link:	NP_071414 Entrez Gene 64084 Human Q9H4D0
Background:	May modulate calcium-mediated postsynaptic signals.
Synonyms:	ALC-GAMMA; Alcadein-gamma; alcagamma; CS2; CSTN2; FLJ39113; FLJ39499; MGC119560
Protein Families:	Transmembrane



[View online »](#)

Product images:

Host: Rabbit
Target Name: CLSTN2
Sample Type: HeLa Cell Lysate
Antibody Dilution: 1.0 μ g/ml

Host: Rabbit
Target Name: CLSTN2
Sample Tissue: Human HeLa Whole Cell lysates
Antibody Dilution: 1 μ g/ml