

## Product datasheet for **TA356822**

### FAM3A Rabbit Polyclonal Antibody

#### Product data:

|                         |   |
|-------------------------|---|
| Product Type:           | Primary Antibodies  |
| Applications:           | WB  |
| Reactivity:             | Human   |
| Host:                   | Rabbit  |
| Clonality:              | Polyclonal  |
| Immunogen:              | The immunogen is a synthetic peptide directed towards the C terminal region of human FAM3A  |
| Specificity:            | <b>Expected reactivity:</b> Human<br><b>Homology:</b> Cow: 86%; Dog: 86%; Guinea Pig: 100%; Horse: 86%; Human: 100%; Mouse: 100%; Rabbit: 100%; Rat: 100%   |
| Formulation:            | Liquid. Purified antibody supplied in 1x PBS buffer with 0.09% (w/v) sodium azide and 2% sucrose.<br><i>Note that this product is shipped as lyophilized powder to China customers.</i>   |
| Concentration:          | lot specific  |
| Purification:           | Affinity purified   |
| Conjugation:            | Unconjugated  |
| Storage:                | For short term use, store at 2-8°C up to 1 week. For long term storage, store at -20°C in small aliquots to prevent freeze-thaw cycles.   |
| Stability:              | Shelf life: one year from despatch.   |
| Predicted Protein Size: | 25 kDa  |
| Gene Name:              | family with sequence similarity 3 member A  |
| Database Link:          | <a href="#">NP_001164603.1</a><br><a href="#">Entrez Gene 60343 Human</a><br><a href="#">P98173</a>   |
| Background:             | This gene encodes a cytokine-like protein. The expression of this gene may be regulated by peroxisome proliferator-activated receptor gamma, and the encoded protein may be involved in the regulation of glucose and lipid metabolism. Alternative splicing results in multiple transcript variants. |

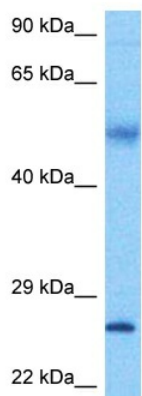


[View online »](#)

**Synonyms:** 2-19; 2.19; DXS560S; OTTHUMP00000015419; XAP-7

**Protein Families:** Secreted Protein, Transmembrane

### Product images:



Host: Rabbit  
Target Name: FAM3A  
Sample Type: Ovary Tumor Lysate  
Antibody Dilution: 1.0 $\mu$ g/ml

Host: Rabbit  
Target Name: FAM3A  
Sample Tissue: Human Ovary Tumor lysates  
Antibody Dilution: 1 $\mu$ g/ml