

Product datasheet for TA356821

SIGIRR Rabbit Polyclonal Antibody

Product data:

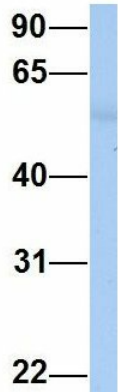
Product Type:	Primary Antibodies
Applications:	IHC, WB
Reactivity:	Human
Host:	Rabbit
Clonality:	Polyclonal
Immunogen:	The immunogen is a synthetic peptide directed towards the C terminal region of human SIGIRR
Specificity:	Expected reactivity: Cow, Dog, Guinea Pig, Horse, Human, Mouse, Pig, Rat, Zebrafish Homology: Cow: 100%; Dog: 100%; Guinea Pig: 86%; Horse: 100%; Human: 100%; Mouse: 100%; Pig: 100%; Rat: 100%; Zebrafish: 86%
Formulation:	Liquid. Purified antibody supplied in 1x PBS buffer with 0.09% (w/v) sodium azide and 2% sucrose. <i>Note that this product is shipped as lyophilized powder to China customers.</i>
Concentration:	lot specific
Purification:	Affinity Purified
Conjugation:	Unconjugated
Storage:	For short term use, store at 2-8°C up to 1 week. For long term storage, store at -20°C in small aliquots to prevent freeze-thaw cycles.
Stability:	Shelf life: one year from despatch.
Predicted Protein Size:	25kDa
Gene Name:	single immunoglobulin and toll-interleukin 1 receptor (TIR) domain
Database Link:	Entrez Gene 59307 Human Q6IA17
Background:	SIGIRR acts as a negative regulator of the Toll-like and IL-1R receptor signaling pathways. It attenuates the recruitment of receptor-proximal signaling components to the TLR4 receptor, probably through a TIR-TIR domain interaction with TLR4. Through its extracellular domain it interferes with the heterodimerization of IL1R1 and IL1RAP.
Synonyms:	MGC110992; TIR8



[View online »](#)

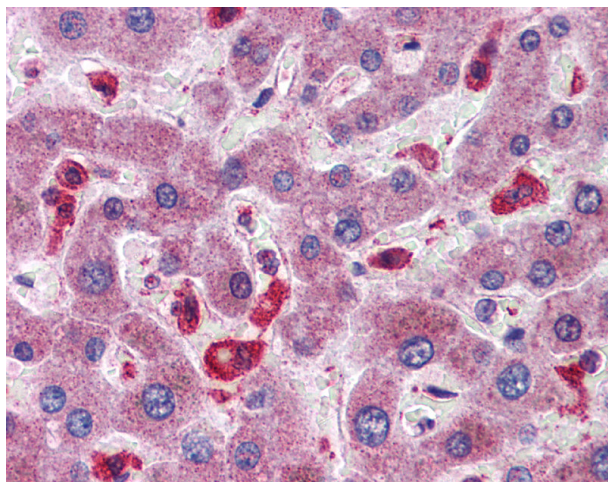
Product images:

SIGIRR



Rabbit Anti-SIGIRR
Sample Type: Human Adult Placenta
Antibody Concentration: 1ug/mL

Host: Rabbit
Target Name: SIGIRR
Sample Type: Human Adult Placenta
Antibody Dilution: 1.0ug/ml



Liver