

## Product datasheet for **TA356820**

### Cadherin 22 (CDH22) Rabbit Polyclonal Antibody

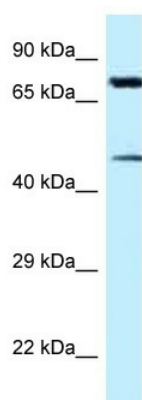
#### Product data:

Product Type:	Primary Antibodies
Applications:	WB
Reactivity:	Human
Host:	Rabbit
Clonality:	Polyclonal
Specificity:	<b>Expected reactivity:</b> Cow, Dog, Guinea Pig, Horse, Human, Mouse, Rabbit, Rat, Zebrafish <b>Homology:</b> Cow: 100%; Dog: 100%; Guinea Pig: 100%; Horse: 100%; Human: 100%; Mouse: 100%; Rabbit: 100%; Rat: 100%; Zebrafish: 91%
Formulation:	Liquid. Purified antibody supplied in 1x PBS buffer with 0.09% (w/v) sodium azide and 2% sucrose.
Concentration:	lot specific
Purification:	Affinity Purified
Conjugation:	Unconjugated
Storage:	For short term use, store at 2-8°C up to 1 week. For long term storage, store at -20°C in small aliquots to prevent freeze-thaw cycles.
Stability:	Shelf life: one year from despatch.
Predicted Protein Size:	73kDa
Gene Name:	cadherin 22
Database Link:	<a href="#">NP_033355</a> <a href="#">Entrez Gene 21408 Mouse</a> <a href="#">Entrez Gene 64405 Human</a> <a href="#">Q61751</a>
Background:	CDH22 is a member of the cadherin superfamily. CDH22 is composed of five cadherin repeat domains and a cytoplasmic tail similar to the highly conserved cytoplasmic region of classical cadherins.
Synonyms:	C20orf25; dj998H6.1; MGC39564; PB-cadherin



[View online »](#)

## Product images:



WB Suggested Anti-CDH22 Antibody  
Titration: 1.0 ug/ml  
Positive Control: Hela Whole Cell