

Product datasheet for **TA356819**

Angiopoietin like 7 (ANGPTL7) Rabbit Polyclonal Antibody

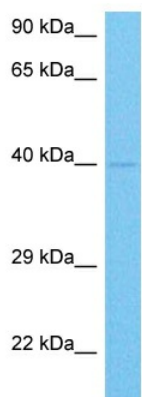
Product data:

| | |
|-------------------------|---|
| Product Type: | Primary Antibodies |
| Applications: | WB |
| Reactivity: | Human |
| Host: | Rabbit |
| Clonality: | Polyclonal |
| Immunogen: | The immunogen for Anti-ANGPTL7 antibody is: synthetic peptide directed towards the N-terminal region of Human ANGL7 |
| Specificity: | Expected reactivity: Cow, Dog, Guinea Pig, Horse, Human, Mouse, Rabbit, Rat, Zebrafish Homology: Cow: 100%; Dog: 100%; Guinea Pig: 93%; Horse: 100%; Human: 100%; Mouse: 100%; Rabbit: 100%; Rat: 100%; Zebrafish: 79% |
| Formulation: | Liquid. Purified antibody supplied in 1x PBS buffer with 0.09% (w/v) sodium azide and 2% sucrose. <i>Note that this product is shipped as lyophilized powder to China customers.</i> |
| Concentration: | lot specific |
| Purification: | Affinity purified |
| Conjugation: | Unconjugated |
| Storage: | For short term use, store at 2-8°C up to 1 week. For long term storage, store at -20°C in small aliquots to prevent freeze-thaw cycles. |
| Stability: | Shelf life: one year from despatch. |
| Predicted Protein Size: | 38 kDa |
| Gene Name: | angiopoietin like 7 |
| Database Link: | NP_066969.1 Entrez Gene 10218 Human O43827 |
| Synonyms: | AngX; CDT6; dJ647M16.1; RP4-647M16.2 |



[View online »](#)

Product images:



Host: Rabbit
Target Name: ANGL7
Sample Tissue: 721_B Cell Lysate
Antibody Dilution: 1.0µg/ml

Host: Rabbit
Target Name: ANGL7
Sample Type: 721_B Whole Cell
Antibody Dilution: 1.0ug/ml