

## Product datasheet for **TA356817**

### SPINT2 Rabbit Polyclonal Antibody

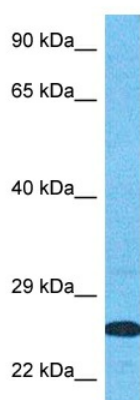
#### Product data:

Product Type:	Primary Antibodies
Applications:	WB
Reactivity:	Human
Host:	Rabbit
Clonality:	Polyclonal
Immunogen:	The immunogen is a synthetic peptide directed towards the middle region of Human SPIT2
Specificity:	<b>Expected reactivity:</b> Cow, Horse, Human, Pig <b>Homology:</b> Cow: 86%; Horse: 79%; Human: 100%; Pig: 86%
Formulation:	Liquid. Purified antibody supplied in 1x PBS buffer with 0.09% (w/v) sodium azide and 2% sucrose. <i>Note that this product is shipped as lyophilized powder to China customers.</i>
Concentration:	lot specific
Purification:	Affinity purified
Conjugation:	Unconjugated
Storage:	For short term use, store at 2-8°C up to 1 week. For long term storage, store at -20°C in small aliquots to prevent freeze-thaw cycles.
Stability:	Shelf life: one year from despatch.
Predicted Protein Size:	27kDa
Gene Name:	serine peptidase inhibitor, Kunitz type, 2
Database Link:	<a href="#">NP_066925</a> <a href="#">Entrez Gene 10653 Human</a> <a href="#">O43291</a>
Background:	This gene encodes a transmembrane protein with two extracellular Kunitz domains that inhibits a variety of serine proteases. The protein inhibits HGF activator which prevents the formation of active hepatocyte growth factor. This gene is a putative tumor suppressor, and mutations in this gene result in congenital sodium diarrhea. Multiple transcript variants encoding different isoforms have been found for this gene.
Synonyms:	DIAR3; FLJ45571; HAI-2; HAI2; Kop; PB



[View online >](#)

## Product images:



Host: Rabbit  
Target Name: SPIT2  
Sample Tissue: MCF7 Cell Lysate  
Antibody Dilution: 1.0 $\mu$ g/ml

Host: Rabbit  
Target Name: SPIT2  
Sample Type: MCF7 Whole Cell lysates  
Antibody Dilution: 1.0 $\mu$ g/ml