

Product datasheet for **TA356815**

AADACL1 (NCEH1) Rabbit Polyclonal Antibody

Product data:

Product Type:	Primary Antibodies
Applications:	WB
Reactivity:	Human
Host:	Rabbit
Clonality:	Polyclonal
Immunogen:	The immunogen is a synthetic peptide directed towards the C-terminal region of Human NCEH1
Specificity:	Expected reactivity: Cow, Dog, Guinea Pig, Horse, Human, Mouse, Rabbit, Rat Homology: Cow: 100%; Dog: 93%; Guinea Pig: 93%; Horse: 100%; Human: 100%; Mouse: 100%; Rabbit: 93%; Rat: 100%
Formulation:	Liquid. Purified antibody supplied in 1x PBS buffer with 0.09% (w/v) sodium azide and 2% sucrose. <i>Note that this product is shipped as lyophilized powder to China customers.</i>
Concentration:	lot specific
Purification:	Affinity purified
Conjugation:	Unconjugated
Storage:	For short term use, store at 2-8°C up to 1 week. For long term storage, store at -20°C in small aliquots to prevent freeze-thaw cycles.
Stability:	Shelf life: one year from despatch.
Predicted Protein Size:	30kDa
Gene Name:	neutral cholesterol ester hydrolase 1
Database Link:	Entrez Gene 57552 Human Q6PIU2-3



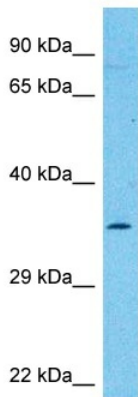
[View online »](#)

Background:

NCEH1 hydrolyzes 2-acetyl monoalkylglycerol ether, the penultimate precursor of the pathway for de novo synthesis of platelet-activating factor. It may be responsible for cholesterol ester hydrolysis in macrophages, thereby contributing to the development of atherosclerosis. NCEH1 also involved in organ detoxification by hydrolyzing exogenous organophosphorus compounds. It may contribute to cancer pathogenesis by promoting tumor cell migration.

Synonyms:

AADACL1; NCEH

Product images:

Host: Rabbit
Target Name: NCEH1
Sample Tissue: THP-1 Cell Lysate
Antibody Dilution: 1.0µg/ml

Host: Rabbit
Target Name: NCEH1
Sample Type: THP-1 Whole Cell lysates
Antibody Dilution: 1.0ug/ml