

Product datasheet for **TA356811**

Atp10d Rabbit Polyclonal Antibody

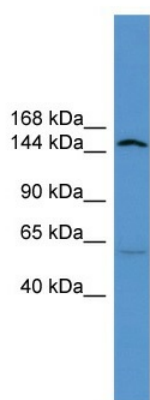
Product data:

Product Type:	Primary Antibodies
Applications:	WB
Reactivity:	Rat
Host:	Rabbit
Clonality:	Polyclonal
Immunogen:	The immunogen is a synthetic peptide corresponding to a region of Rat
Specificity:	Expected reactivity: Cow, Dog, Guinea Pig, Horse, Human, Mouse, Rabbit, Rat, Zebrafish Homology: Cow: 100%; Dog: 93%; Guinea Pig: 100%; Horse: 100%; Human: 100%; Mouse: 100%; Rabbit: 100%; Rat: 100%; Zebrafish: 91%
Formulation:	Liquid. Purified antibody supplied in 1x PBS buffer with 0.09% (w/v) sodium azide and 2% sucrose.
Concentration:	lot specific
Purification:	Affinity Purified
Conjugation:	Unconjugated
Storage:	For short term use, store at 2-8°C up to 1 week. For long term storage, store at -20°C in small aliquots to prevent freeze-thaw cycles.
Stability:	Shelf life: one year from despatch.
Predicted Protein Size:	153kDa
Gene Name:	ATPase phospholipid transporting 10D (putative)
Database Link:	XP_002725021 Entrez Gene 360932 Rat
Background:	The function of Atp10d remains unknown.
Synonyms:	ATPVD; KIAA1487



[View online »](#)

Product images:



WB Suggested Anti-Atp10d Antibody Titration:
0.2-1 $\mu\text{g/ml}$
ELISA Titer: 1:312500
Positive Control: Rat Lung