

## Product datasheet for **TA356810**

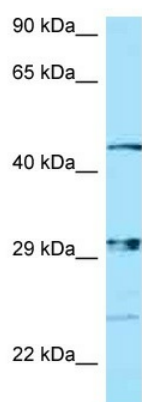
### NIPAL3 Rabbit Polyclonal Antibody

#### Product data:

Product Type:	Primary Antibodies
Applications:	WB
Reactivity:	Human
Host:	Rabbit
Clonality:	Polyclonal
Specificity:	<b>Expected reactivity:</b> Cow, Dog, Horse, Human, Mouse, Pig, Rabbit <b>Homology:</b> Cow: 81%; Dog: 75%; Horse: 81%; Human: 100%; Mouse: 79%; Pig: 88%; Rabbit: 81%
Formulation:	Liquid. Purified antibody supplied in 1x PBS buffer with 0.09% (w/v) sodium azide and 2% sucrose.
Concentration:	lot specific
Purification:	Affinity Purified
Conjugation:	Unconjugated
Storage:	For short term use, store at 2-8°C up to 1 week. For long term storage, store at -20°C in small aliquots to prevent freeze-thaw cycles.
Stability:	Shelf life: one year from despatch.
Predicted Protein Size:	45kDa
Gene Name:	NIPA like domain containing 3
Database Link:	<a href="#">NP_065181</a> <a href="#">Entrez Gene 57185 Human</a> <a href="#">Q6P499</a>
Background:	The function of this protein remains unknown.
Synonyms:	DJ462O23.2; DKFZp686E22155; NPAL3
Protein Families:	Transmembrane



[View online »](#)

**Product images:**

WB Suggested Anti-NPAL3 Antibody  
Titration: 1.0 ug/ml  
Positive Control: ACHN Whole Cell  
NIPAL3 is supported by BioGPS gene expression data to be expressed in ACHN