

Product datasheet for **TA356809**

NIPAL3 Rabbit Polyclonal Antibody

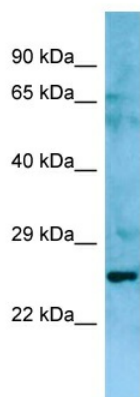
Product data:

Product Type:	Primary Antibodies
Applications:	WB
Reactivity:	Human
Host:	Rabbit
Clonality:	Polyclonal
Immunogen:	The immunogen is a synthetic peptide directed towards the N-terminal region of Human NIPAL3
Specificity:	Expected reactivity: Cow, Dog, Horse, Human, Mouse, Pig Homology: Cow: 79%; Dog: 85%; Horse: 92%; Human: 100%; Mouse: 79%; Pig: 93%
Formulation:	Liquid. Purified antibody supplied in 1x PBS buffer with 0.09% (w/v) sodium azide and 2% sucrose.
Concentration:	lot specific
Purification:	Affinity Purified
Conjugation:	Unconjugated
Storage:	For short term use, store at 2-8°C up to 1 week. For long term storage, store at -20°C in small aliquots to prevent freeze-thaw cycles.
Stability:	Shelf life: one year from despatch.
Predicted Protein Size:	24kDa
Gene Name:	NIPA like domain containing 3
Database Link:	Entrez Gene 57185 Human Q6P499-3
Background:	The function of this protein remains unknown.
Synonyms:	DJ462O23.2; DKFZp686E22155; NPAL3



[View online »](#)

Product images:



Host: Rabbit
Target Name: NIPAL3
Sample Tissue: Fetal Thymus Lysate
Antibody Dilution: 1.0µg/ml

Host: Rabbit
Target Name: NIPAL3
Sample Type: Fetal Thymus lysates
Antibody Dilution: 1.0ug/ml