

## Product datasheet for **TA356806**

### Jph4 Rabbit Polyclonal Antibody

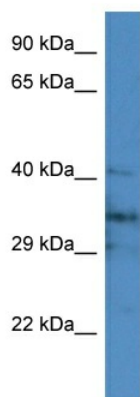
#### Product data:

Product Type:	Primary Antibodies
Applications:	WB
Reactivity:	Mouse
Host:	Rabbit
Clonality:	Polyclonal
Immunogen:	The immunogen is a synthetic peptide directed towards the middle region of MOUSE Jph4
Specificity:	<b>Expected reactivity:</b> Cow, Dog, Guinea Pig, Horse, Human, Mouse, Rabbit, Rat, Zebrafish <b>Homology:</b> Cow: 100%; Dog: 100%; Guinea Pig: 100%; Horse: 100%; Human: 100%; Mouse: 100%; Rabbit: 100%; Rat: 100%; Zebrafish: 100%
Formulation:	Liquid. Purified antibody supplied in 1x PBS buffer with 0.09% (w/v) sodium azide and 2% sucrose. <i>Note that this product is shipped as lyophilized powder to China customers.</i>
Concentration:	lot specific
Purification:	Affinity Purified
Conjugation:	Unconjugated
Storage:	For short term use, store at 2-8°C up to 1 week. For long term storage, store at -20°C in small aliquots to prevent freeze-thaw cycles.
Stability:	Shelf life: one year from despatch.
Predicted Protein Size:	44kDa
Gene Name:	junctophilin 4
Database Link:	<a href="#">Entrez Gene 319984 Mouse Q80WT0-2</a>
Background:	Junctophilins contribute to the formation of junctional membrane complexes (JMCs) which link the plasma membrane with the endoplasmic or sarcoplasmic reticulum in excitable cells. Jph4 provides a structural foundation for functional cross-talk between the cell surface and intracellular calcium release channels. JPH4 is brain-specific and appears to have an active role in certain neurons involved in motor coordination and memory.
Synonyms:	FLJ34253; JP4; JPHL1; KIAA1831; OTTHUMP00000027957



[View online »](#)

## Product images:



Host: Rabbit  
Target Name: Jph4  
Sample Tissue: Mouse Brain Lysate  
Antibody Dilution: 1.0 $\mu$ g/ml

Host: Rabbit  
Target Name: Jph4  
Sample Type: Mouse Brain lysates  
Antibody Dilution: 1.0ug/ml