

Product datasheet for **TA356798**

Nlgn3 Rabbit Polyclonal Antibody

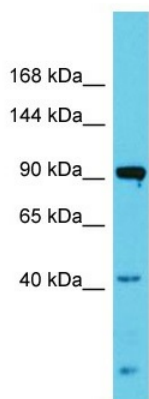
Product data:

Product Type:	Primary Antibodies
Applications:	WB
Reactivity:	Rat
Host:	Rabbit
Clonality:	Polyclonal
Immunogen:	The immunogen is a synthetic peptide directed towards the N-terminal region of Rat Nlgn3
Specificity:	Expected reactivity: Cow, Dog, Guinea Pig, Horse, Human, Mouse, Rabbit, Rat, Zebrafish Homology: Cow: 100%; Dog: 100%; Guinea Pig: 100%; Horse: 100%; Human: 100%; Mouse: 100%; Rabbit: 100%; Rat: 100%; Zebrafish: 93%
Formulation:	Liquid. Purified antibody supplied in 1x PBS buffer with 0.09% (w/v) sodium azide and 2% sucrose.
Concentration:	lot specific
Purification:	Affinity Purified
Conjugation:	Unconjugated
Storage:	For short term use, store at 2-8°C up to 1 week. For long term storage, store at -20°C in small aliquots to prevent freeze-thaw cycles.
Stability:	Shelf life: one year from despatch.
Predicted Protein Size:	93kDa
Gene Name:	neuroligin 3
Database Link:	NP_599163 Entrez Gene 171297 Rat Q62889
Background:	Nlgn3 is a neuronal cell surface protein that binds neurexins.
Synonyms:	ASPGX1; AUTSX1; HNL3; KIAA1480; NL3

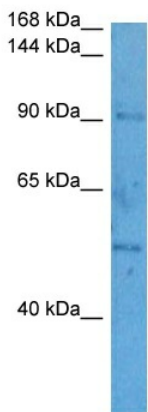


[View online »](#)

Product images:



Host: Rabbit
 Target Name: Nlgn3
 Sample Type: Rat Testis lysates
 Antibody Dilution: 1.0ug/ml



Host: Rabbit
 Target Name: NLGN3
 Sample Type: Rat Testis Lysate
 Antibody Dilution: 1.0µg/ml

Host: Rabbit
 Target Name: NLGN3
 Sample Tissue: Rat Testis
 Antibody Dilution: 5ug/ml