

Product datasheet for **TA356775**

GGT2 Rabbit Polyclonal Antibody

Product data:

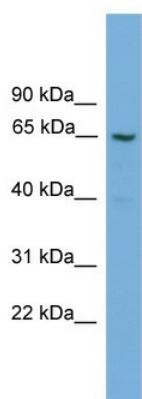
Product Type:	Primary Antibodies
Applications:	WB
Reactivity:	Human
Host:	Rabbit
Clonality:	Polyclonal
Immunogen:	The immunogen is a synthetic peptide directed towards the N terminal region of human GGT2
Specificity:	Expected reactivity: Cow, Dog, Guinea Pig, Horse, Human, Pig, Rabbit, Rat, Zebrafish Homology: Cow: 86%; Dog: 86%; Guinea Pig: 86%; Horse: 79%; Human: 100%; Pig: 100%; Rabbit: 93%; Rat: 86%; Zebrafish: 86%
Formulation:	Liquid. Purified antibody supplied in 1x PBS buffer with 0.09% (w/v) sodium azide and 2% sucrose.
Concentration:	lot specific
Purification:	Affinity Purified
Conjugation:	Unconjugated
Storage:	For short term use, store at 2-8°C up to 1 week. For long term storage, store at -20°C in small aliquots to prevent freeze-thaw cycles.
Stability:	Shelf life: one year from despatch.
Predicted Protein Size:	62kDa
Gene Name:	gamma-glutamyltransferase 2
Database Link:	XP_001129425 Entrez Gene 728441 Human P36268
Background:	GGT2 belongs to the gamma-glutamyltransferase (GGT; EC 2.3.2.2) gene family. GGT is a membrane-bound extracellular enzyme that cleaves gamma-glutamyl peptide bonds in glutathione and other peptides and transfers the gamma-glutamyl moiety to acceptors. GGT is also key to glutathione homeostasis because it provides substrates for glutathione synthesis (Heisterkamp et al., 2008 [PubMed 18357469]).



[View online »](#)

Synonyms: GGT

Product images:



WB Suggested Anti-GGT2 Antibody Titration: 0.2-1 ug/ml
Positive Control: Hela cell lysate