

Product datasheet for **TA356767**

CHSY3 Rabbit Polyclonal Antibody

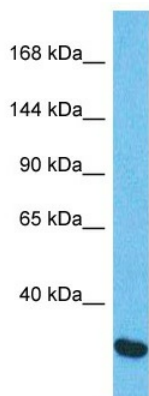
Product data:

Product Type:	Primary Antibodies
Applications:	WB
Reactivity:	Human
Host:	Rabbit
Clonality:	Polyclonal
Immunogen:	The immunogen is a synthetic peptide directed towards the N-terminal region of human CHSY3
Specificity:	Expected reactivity: Dog, Human, Mouse, Pig, Rabbit, Rat Homology: Dog: 100%; Human: 100%; Mouse: 86%; Pig: 90%; Rabbit: 100%; Rat: 86%
Formulation:	Liquid. Purified antibody supplied in 1x PBS buffer with 0.09% (w/v) sodium azide and 2% sucrose. <i>Note that this product is shipped as lyophilized powder to China customers.</i>
Concentration:	lot specific
Purification:	Affinity Purified
Conjugation:	Unconjugated
Storage:	For short term use, store at 2-8°C up to 1 week. For long term storage, store at -20°C in small aliquots to prevent freeze-thaw cycles.
Stability:	Shelf life: one year from despatch.
Predicted Protein Size:	31kDa
Gene Name:	chondroitin sulfate synthase 3
Database Link:	NP_787052.3 Entrez Gene 337876 Human Q70JA7
Background:	CSS3 is a glycosyltransferase that has both glucuronyltransferase and N-acetylgalactosaminyltransferase activities (Yada et al., 2003 [PubMed 12907687]).[supplied by OMIM, Mar 2008]
Synonyms:	ChSy-2; CHSY2; CSS3
Protein Families:	Transmembrane



[View online »](#)

Protein Pathways: Chondroitin sulfate biosynthesis, Metabolic pathways

Product images:

Host: Rabbit
Target Name: CHSY2
Sample Type: Esophagus Tumor lysates
Antibody Dilution: 1.0ug/ml