

Product datasheet for **TA356763**

SHMT1 Rabbit Polyclonal Antibody

Product data:

Product Type:	Primary Antibodies
Reactivity:	Human
Host:	Rabbit
Clonality:	Polyclonal
Immunogen:	The immunogen is a synthetic peptide directed towards the following sequence LVDLRKGTDDGGRAEKVLEACSIACNKNTCPGDRSALRPSGLRLGTPALT
Specificity:	Expected reactivity: Cow, Dog, Guinea Pig, Horse, Human, Mouse, Rabbit, Rat, Sheep, Zebrafish Homology: Cow: 100%; Dog: 100%; Guinea Pig: 93%; Horse: 100%; Human: 100%; Mouse: 100%; Rabbit: 100%; Rat: 100%; Sheep: 100%; Zebrafish: 93%
Formulation:	Liquid. Purified antibody supplied in 1x PBS buffer with 0.09% (w/v) sodium azide and 2% sucrose.
Concentration:	lot specific
Purification:	Affinity Purified
Conjugation:	Unconjugated
Storage:	For short term use, store at 2-8°C up to 1 week. For long term storage, store at -20°C in small aliquots to prevent freeze-thaw cycles.
Stability:	Shelf life: one year from despatch.
Predicted Protein Size:	53 kDa
Gene Name:	serine hydroxymethyltransferase 1
Database Link:	NP_004160 Entrez Gene 6470 Human P34896



[View online »](#)

Background:

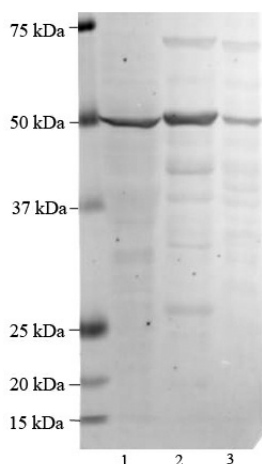
This gene encodes the cellular form of serine hydroxymethyltransferase, a pyridoxal phosphate-containing enzyme that catalyzes the reversible conversion of serine and tetrahydrofolate to glycine and 5,10-methylene tetrahydrofolate. This reaction provides one carbon units for synthesis of methionine, thymidylate, and purines in the cytoplasm. This gene is located within the Smith-Magenis syndrome region on chromosome 17. Alternative splicing of this gene results in 2 transcript variants encoding 2 different isoforms. Additional transcript variants have been described, but their biological validity has not been determined.

Synonyms:

CSHMT; MGC15229; MGC24556; SHMT

Protein Pathways:

Cyanoamino acid metabolism, Glycine, serine and threonine metabolism, Metabolic pathways, Methane metabolism, One carbon pool by folate

Product images:

Host: Rabbit
Target Name: SHMT1
Sample Type:
Lane 1: Human Liver
Lane 2: Mouse Liver
Lane 3: Rat Liver
Primary Dilution: 1:1000
Secondary Dilution: 1:2500
Anti-rabbit secondary antibody conjugated with Alexa Fluor 647

Host: Rabbit
Target Name: SHMT1
Sample Type:
Lane 1: 40 ug Human Liver lysate
Lane 2: 40 ug Mouse Liver lysate
Lane 3: 40 ug Rat Liver lysate
Primary Antibody Dilution:
1:1000
Secondary Antibody:
Anti-rabbit secondary antibody conjugated with
Alexa Fluor 647
Secondary Antibody Dilution:
1:2500
Submitted by:
Hua Jiang, University of Colorado.