

Product datasheet for **TA356752**

METTL22 Rabbit Polyclonal Antibody

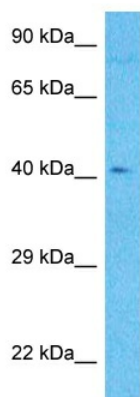
Product data:

Product Type:	Primary Antibodies
Applications:	WB
Reactivity:	Human
Host:	Rabbit
Clonality:	Polyclonal
Immunogen:	The immunogen is a synthetic peptide directed towards the C-terminal region of Human METTL22
Specificity:	Expected reactivity: Cow, Dog, Guinea Pig, Horse, Human, Mouse, Rabbit, Rat Homology: Cow: 93%; Dog: 93%; Guinea Pig: 93%; Horse: 79%; Human: 100%; Mouse: 100%; Rabbit: 93%; Rat: 93%
Formulation:	Liquid. Purified antibody supplied in 1x PBS buffer with 0.09% (w/v) sodium azide and 2% sucrose.
Concentration:	lot specific
Purification:	Affinity Purified
Conjugation:	Unconjugated
Storage:	For short term use, store at 2-8°C up to 1 week. For long term storage, store at -20°C in small aliquots to prevent freeze-thaw cycles.
Stability:	Shelf life: one year from despatch.
Predicted Protein Size:	44kDa
Gene Name:	methyltransferase like 22
Database Link:	Entrez Gene 79091 Human Q9BUU2
Background:	METTL22 is a protein N-lysine methyltransferase, in vitro it methylates KIN.
Synonyms:	C16orf68



[View online »](#)

Product images:



Host: Rabbit
Target Name: METTL22
Sample Tissue: 721_B Cell Lysate
Antibody Dilution: 1.0µg/ml

Host: Rabbit
Target Name: METTL22
Sample Type: 721_B Whole Cell lysates
Antibody Dilution: 1.0ug/ml