

Product datasheet for TA356751

Gmppb Rabbit Polyclonal Antibody

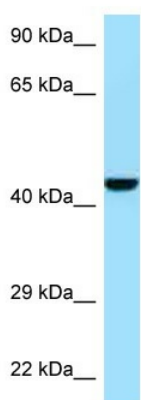
Product data:

Product Type:	Primary Antibodies
Applications:	WB
Reactivity:	Mouse
Host:	Rabbit
Clonality:	Polyclonal
Specificity:	Expected reactivity: Cow, Dog, Goat, Guinea Pig, Human, Mouse, Rabbit, Rat, Yeast, Zebrafish Homology: Cow: 93%; Dog: 93%; Goat: 86%; Guinea Pig: 93%; Human: 100%; Mouse: 100%; Rabbit: 100%; Rat: 100%; Yeast: 93%; Zebrafish: 86%
Formulation:	Liquid. Purified antibody supplied in 1x PBS buffer with 0.09% (w/v) sodium azide and 2% sucrose. <i>Note that this product is shipped as lyophilized powder to China customers.</i>
Concentration:	lot specific
Purification:	Affinity Purified
Conjugation:	Unconjugated
Storage:	For short term use, store at 2-8°C up to 1 week. For long term storage, store at -20°C in small aliquots to prevent freeze-thaw cycles.
Stability:	Shelf life: one year from despatch.
Predicted Protein Size:	40kDa
Gene Name:	GDP-mannose pyrophosphorylase B
Database Link:	NP_808578 Entrez Gene 331026 Mouse Q8BTZ7
Background:	The function of this protein remains unknown.
Synonyms:	KIAA1851



[View online »](#)

Product images:



WB Suggested Anti-Gmppb Antibody
Titration: 1.0 ug/ml
Positive Control: Mouse Pancreas