

## Product datasheet for TA356742

### PION (GSAP) Rabbit Polyclonal Antibody

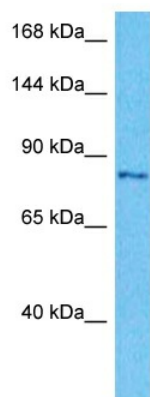
#### Product data:

Product Type:	Primary Antibodies
Applications:	WB
Reactivity:	Human
Host:	Rabbit
Clonality:	Polyclonal
Immunogen:	The immunogen is a synthetic peptide directed towards the N-terminal region of Human GSAP
Specificity:	<b>Expected reactivity:</b> Cow, Dog, Horse, Human, Rabbit, Rat <b>Homology:</b> Cow: 85%; Dog: 85%; Horse: 93%; Human: 100%; Rabbit: 93%; Rat: 86%
Formulation:	Liquid. Purified antibody supplied in 1x PBS buffer with 0.09% (w/v) sodium azide and 2% sucrose.
Concentration:	lot specific
Purification:	Affinity purified
Conjugation:	Unconjugated
Storage:	For short term use, store at 2-8°C up to 1 week. For long term storage, store at -20°C in small aliquots to prevent freeze-thaw cycles.
Stability:	Shelf life: one year from despatch.
Predicted Protein Size:	93kDa
Gene Name:	gamma-secretase activating protein
Database Link:	<a href="#">NP_059135</a> <a href="#">Entrez Gene 54103 Human A4D1B5</a>
Background:	Accumulation of neurotoxic amyloid-beta is a major hallmark of Alzheimer disease. Formation of amyloid-beta is catalyzed by gamma-secretase, a protease with numerous substrates. PION, or GSAP, selectively increases amyloid-beta production through a mechanism involving its interaction with both gamma-secretase and its substrate, the amyloid-beta precursor protein C-terminal fragment (APP-CTF).
Synonyms:	PION



[View online »](#)

## Product images:



Host: Rabbit  
Target Name: GSAP  
Sample Tissue: 721\_B Cell Lysate  
Antibody Dilution: 1.0µg/ml

Host: Rabbit  
Target Name: GSAP  
Sample Type: 721\_B Whole Cell lysates  
Antibody Dilution: 1.0ug/ml