

Product datasheet for **TA356737**

LIPT1 Rabbit Polyclonal Antibody

Product data:

Product Type:	Primary Antibodies
Applications:	WB
Reactivity:	Human
Host:	Rabbit
Clonality:	Polyclonal
Immunogen:	The immunogen is a synthetic peptide directed towards the middle region of Human LIPT
Specificity:	Expected reactivity: Cow, Dog, Guinea Pig, Horse, Human, Mouse, Rabbit, Rat Homology: Cow: 86%; Dog: 100%; Guinea Pig: 93%; Horse: 100%; Human: 100%; Mouse: 93%; Rabbit: 93%; Rat: 93%
Formulation:	Liquid. Purified antibody supplied in 1x PBS buffer with 0.09% (w/v) sodium azide and 2% sucrose. <i>Note that this product is shipped as lyophilized powder to China customers.</i>
Concentration:	lot specific
Purification:	Affinity purified
Conjugation:	Unconjugated
Storage:	For short term use, store at 2-8°C up to 1 week. For long term storage, store at -20°C in small aliquots to prevent freeze-thaw cycles.
Stability:	Shelf life: one year from despatch.
Predicted Protein Size:	41kDa
Gene Name:	lipoyltransferase 1
Database Link:	NP_660200 Entrez Gene 51601 Human Q9Y234



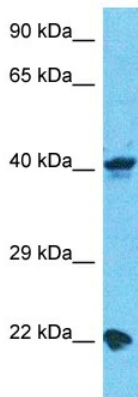
[View online »](#)

Background:

The process of transferring lipoic acid to proteins is a two-step process. The first step is the activation of lipoic acid by lipoate-activating enzyme to form lipoyl-AMP. For the second step, the protein encoded by this gene transfers the lipoyl moiety to apoproteins. Alternative splicing results in multiple transcript variants. A related pseudogene has been identified on chromosome 13. Read-through transcription also exists between this gene and the neighboring downstream mitochondrial ribosomal protein L30 (MRPL30) gene.

Synonyms:

MGC12290; MGC13378

Product images:


Host: Rabbit
 Target Name: LIPT
 Sample Tissue: COLO205 Cell Lysate
 Antibody Dilution: 1.0µg/ml

Host: Rabbit
 Target Name: LIPT
 Sample Type: COLO205 Whole Cell lysates
 Antibody Dilution: 1.0ug/ml