

Product datasheet for **TA356734**

METTL11A (NTMT1) Rabbit Polyclonal Antibody

Product data:

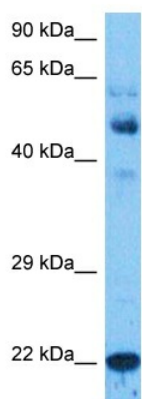
Product Type:	Primary Antibodies
Applications:	WB
Reactivity:	Human
Host:	Rabbit
Clonality:	Polyclonal
Immunogen:	The immunogen is a synthetic peptide directed towards the N region of human NTM1A
Specificity:	Expected reactivity: Human Homology: Cow: 100%; Dog: 100%; Guinea Pig: 93%; Horse: 100%; Human: 100%; Mouse: 100%; Pig: 100%; Rat: 100%
Formulation:	Liquid. Purified antibody supplied in 1x PBS buffer with 0.09% (w/v) sodium azide and 2% sucrose. <i>Note that this product is shipped as lyophilized powder to China customers.</i>
Concentration:	lot specific
Purification:	Affinity purified
Conjugation:	Unconjugated
Storage:	For short term use, store at 2-8°C up to 1 week. For long term storage, store at -20°C in small aliquots to prevent freeze-thaw cycles.
Stability:	Shelf life: one year from despatch.
Predicted Protein Size:	24 kDa
Gene Name:	N-terminal Xaa-Pro-Lys N-methyltransferase 1
Database Link:	NP_001273725.1 Entrez Gene 28989 Human Q9BV86
Background:	The METTL11A gene encodes an N-terminal methyltransferase for the RAN (MIM 601179) guanine nucleotide exchange factor regulator of chromosome condensation 1 (RCC1; MIM 179710). METTL11A enzyme alpha-N-methylates other protein targets such as SET (MIM 600960) and RB (MIM 180200).[supplied by OMIM, Nov 2010]
Synonyms:	2610205E22Rik; AL033331; AL033332; Mettl11a; NTM1A; RGD1306582; RP23-221O14.3



[View online »](#)

Protein Families: Druggable Genome

Product images:



Host: Rabbit
Target Name: NTM1A
Sample Type: Large Intestine Tumor Lysate
Antibody Dilution: 1.0 μ g/ml

Host: Rabbit
Target Name: NTM1A
Sample Tissue: Large Intestine Tumor lysates
Antibody Dilution: 1 ug/ml