

## Product datasheet for **TA356733**

### **METTL1 Rabbit Polyclonal Antibody**

#### **Product data:**

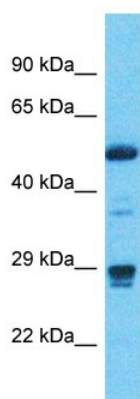
Product Type:	Primary Antibodies
Applications:	WB
Reactivity:	Human
Host:	Rabbit
Clonality:	Polyclonal
Immunogen:	The immunogen is a synthetic peptide directed towards the C-terminal region of Human METTL1
Specificity:	<b>Expected reactivity:</b> Cow, Dog, Guinea Pig, Horse, Human, Mouse, Rabbit, Rat, Yeast <b>Homology:</b> Cow: 93%; Dog: 93%; Guinea Pig: 93%; Horse: 93%; Human: 100%; Mouse: 100%; Rabbit: 93%; Rat: 93%; Yeast: 90%
Formulation:	Liquid. Purified antibody supplied in 1x PBS buffer with 0.09% (w/v) sodium azide and 2% sucrose. <i>Note that this product is shipped as lyophilized powder to China customers.</i>
Concentration:	lot specific
Purification:	Affinity Purified
Conjugation:	Unconjugated
Storage:	For short term use, store at 2-8°C up to 1 week. For long term storage, store at -20°C in small aliquots to prevent freeze-thaw cycles.
Stability:	Shelf life: one year from despatch.
Predicted Protein Size:	30kDa
Gene Name:	methyltransferase like 1
Database Link:	<a href="#">NP_075422</a> <a href="#">Entrez Gene 4234 Human</a> <a href="#">Q9UBP6</a>
Background:	This gene is similar in sequence to the <i>S. cerevisiae</i> YDL201w gene. The gene product contains a conserved S-adenosylmethionine-binding motif and is inactivated by phosphorylation. Alternative splice variants encoding different protein isoforms have been described for this gene. A pseudogene has been identified on chromosome X.



[View online »](#)

Synonyms: C12orf1; FLJ95748; TRM8; tRNA(m7G46)-methyltransferase; YDL201w

### Product images:



Host: Rabbit  
Target Name: METTL1  
Sample Tissue: Stomach Tumor Lysate  
Antibody Dilution: 1.0µg/ml

Host: Rabbit  
Target Name: METTL1  
Sample Type: Stomach Tumor lysates  
Antibody Dilution: 1.0ug/ml