

Product datasheet for **TA356731**

glutathione S transferase Omega 1 (GSTO1) Rabbit Polyclonal Antibody

Product data:

Product Type:	Primary Antibodies
Applications:	WB
Reactivity:	Human
Host:	Rabbit
Clonality:	Polyclonal
Immunogen:	The immunogen is a synthetic peptide directed towards the C terminal region of human GSTO1
Specificity:	Expected reactivity: Human Homology: Cow: 79%; Dog: 79%; Human: 100%
Formulation:	Liquid. Purified antibody supplied in 1x PBS buffer with 0.09% (w/v) sodium azide and 2% sucrose. <i>Note that this product is shipped as lyophilized powder to China customers.</i>
Concentration:	lot specific
Purification:	Affinity purified
Conjugation:	Unconjugated
Storage:	For short term use, store at 2-8°C up to 1 week. For long term storage, store at -20°C in small aliquots to prevent freeze-thaw cycles.
Stability:	Shelf life: one year from despatch.
Predicted Protein Size:	26 kDa
Gene Name:	glutathione S-transferase omega 1
Database Link:	NP_001177931.1 Entrez Gene 9446 Human P78417
Background:	The protein encoded by this gene is an omega class glutathione S-transferase (GST) with glutathione-dependent thiol transferase and dehydroascorbate reductase activities. GSTs are involved in the metabolism of xenobiotics and carcinogens. The encoded protein acts as a homodimer and is found in the cytoplasm. Three transcript variants encoding different isoforms have been found for this gene.



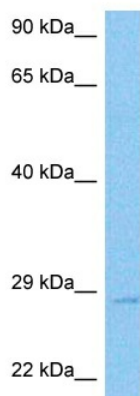
[View online »](#)

Synonyms: DKFZp686H13163; GSTTLp28; P28

Protein Families: Druggable Genome

Protein Pathways: Drug metabolism - cytochrome P450, Glutathione metabolism, Metabolism of xenobiotics by cytochrome P450

Product images:



Host: Rabbit
 Target Name: GSTO1
 Sample Type: Lymph Node Tumor Lysate
 Antibody Dilution: 1.0µg/ml

Host: Rabbit
 Target Name: GSTO1
 Sample Tissue: Lymph Node Tumor lysates
 Antibody Dilution: 1 ug/ml