

Product datasheet for **TA356730**

Polg Rabbit Polyclonal Antibody

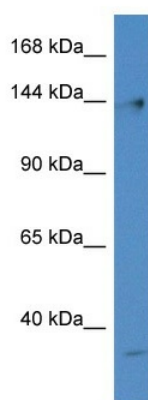
Product data:

Product Type:	Primary Antibodies
Applications:	WB
Reactivity:	Rat
Host:	Rabbit
Clonality:	Polyclonal
Specificity:	Expected reactivity: Cow, Dog, Guinea Pig, Horse, Human, Mouse, Rat, Yeast, Zebrafish Homology: Cow: 100%; Dog: 93%; Guinea Pig: 93%; Horse: 93%; Human: 100%; Mouse: 100%; Rat: 100%; Yeast: 79%; Zebrafish: 93%
Formulation:	Liquid. Purified antibody supplied in 1x PBS buffer with 0.09% (w/v) sodium azide and 2% sucrose. <i>Note that this product is shipped as lyophilized powder to China customers.</i>
Concentration:	lot specific
Purification:	Affinity Purified
Conjugation:	Unconjugated
Storage:	For short term use, store at 2-8°C up to 1 week. For long term storage, store at -20°C in small aliquots to prevent freeze-thaw cycles.
Stability:	Shelf life: one year from despatch.
Predicted Protein Size:	136kDa
Gene Name:	polymerase (DNA) gamma, catalytic subunit
Database Link:	NP_445980 Entrez Gene 85472 Rat Q9QYV8
Background:	Polg is involved in the replication of mitochondrial DNA.
Synonyms:	FLJ27114; MDP1; PEO; PolG-alpha; POLG1; POLGA; SANDO; SCAE



[View online »](#)

Product images:



WB Suggested Anti-Polg Antibody
Titration: 1.0 ug/ml
Positive Control: Rat Lung