

## Product datasheet for TA356729

### Naa11 Rabbit Polyclonal Antibody

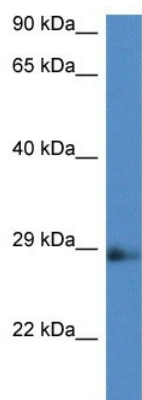
#### Product data:

Product Type:	Primary Antibodies
Applications:	WB
Reactivity:	Rat
Host:	Rabbit
Clonality:	Polyclonal
Specificity:	<b>Expected reactivity:</b> Cow, Dog, Guinea Pig, Horse, Human, Mouse, Rabbit, Rat, Yeast, Zebrafish <b>Homology:</b> Cow: 100%; Dog: 100%; Guinea Pig: 100%; Horse: 100%; Human: 100%; Mouse: 100%; Rabbit: 100%; Rat: 100%; Yeast: 100%; Zebrafish: 100%
Formulation:	Liquid. Purified antibody supplied in 1x PBS buffer with 0.09% (w/v) sodium azide and 2% sucrose.
Concentration:	lot specific
Purification:	Affinity Purified
Conjugation:	Unconjugated
Storage:	For short term use, store at 2-8°C up to 1 week. For long term storage, store at -20°C in small aliquots to prevent freeze-thaw cycles.
Stability:	Shelf life: one year from despatch.
Predicted Protein Size:	27kDa
Gene Name:	N(alpha)-acetyltransferase 11, NatA catalytic subunit
Database Link:	<a href="#">NP_001019913</a> <a href="#">Entrez Gene 289482 Rat</a> <a href="#">Q4V8K3</a>
Background:	In complex with NAA15, Ard1b displays alpha (N-terminal) acetyltransferase activity.
Synonyms:	Ard1b; Ard2; C80008



[View online »](#)

Product images:



WB Suggested Anti-Ard1b Antibody  
Titration: 1.0 ug/ml  
Positive Control: Rat Lung