

## Product datasheet for TA356719

### CPT2 Rabbit Polyclonal Antibody

#### Product data:

Product Type:	Primary Antibodies
Applications:	IHC, WB
Reactivity:	Human
Host:	Rabbit
Clonality:	Polyclonal
Immunogen:	The immunogen is a synthetic peptide directed towards the N-terminal region of Human CPT2
Specificity:	<b>Expected reactivity:</b> Cow, Dog, Guinea Pig, Horse, Human, Mouse, Pig, Rabbit, Rat, Zebrafish <b>Homology:</b> Cow: 100%; Dog: 93%; Guinea Pig: 93%; Horse: 100%; Human: 100%; Mouse: 100%; Pig: 100%; Rabbit: 93%; Rat: 100%; Zebrafish: 86%
Formulation:	Liquid. Purified antibody supplied in 1x PBS buffer with 0.09% (w/v) sodium azide and 2% sucrose. <i>Note that this product is shipped as lyophilized powder to China customers.</i>
Concentration:	lot specific
Purification:	Affinity Purified
Conjugation:	Unconjugated
Storage:	For short term use, store at 2-8°C up to 1 week. For long term storage, store at -20°C in small aliquots to prevent freeze-thaw cycles.
Stability:	Shelf life: one year from despatch.
Predicted Protein Size:	74kDa
Gene Name:	carnitine palmitoyltransferase 2
Database Link:	<a href="#">NP_000089</a> <a href="#">Entrez Gene 1376 Human</a> <a href="#">P23786</a>
Background:	The protein encoded by this gene is a nuclear protein which is transported to the mitochondrial inner membrane. Together with carnitine palmitoyltransferase I, the encoded protein oxidizes long-chain fatty acids in the mitochondria. Defects in this gene are associated with mitochondrial long-chain fatty-acid (LCFA) oxidation disorders.



[View online »](#)

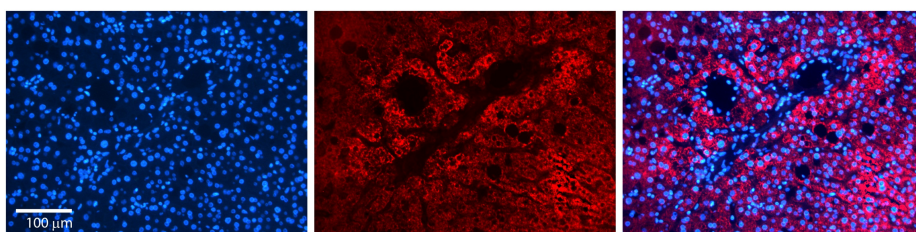
Synonyms: CPT1; CPTASE

### Product images:

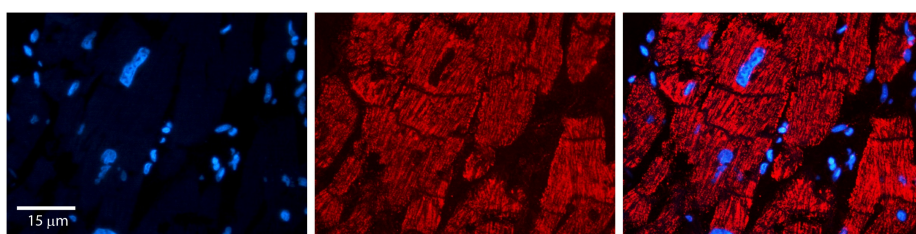


Host: Rabbit  
 Target Name: CPT2  
 Sample Tissue: Ovary Tumor Lysate  
 Antibody Dilution: 1.0µg/ml

Host: Rabbit  
 Target Name: CPT2  
 Sample Type: Ovary Tumor lysates  
 Antibody Dilution: 1.0ug/ml



Rabbit Anti-CPT2 Antibody  
 Catalog Number: TA356719  
 Formalin Fixed Paraffin Embedded Tissue:  
 Human Liver Tissue  
 Observed Staining: Cytoplasm in hepatocytes  
 Primary Antibody Concentration: N/A  
 Other Working Concentrations: 1:600  
 Secondary Antibody: Donkey anti-Rabbit-Cy3  
 Secondary Antibody Concentration: 1:200  
 Magnification: 20X  
 Exposure Time: 0.5–2.0 sec



Rabbit Anti-CPT2 Antibody  
 Catalog Number: TA356719  
 Formalin Fixed Paraffin Embedded Tissue:  
 Human heart Tissue  
 Observed Staining: Cytoplasmic in mitochondria  
 Primary Antibody Concentration: 1:100  
 Other Working Concentrations: 1:600  
 Secondary Antibody: Donkey anti-Rabbit-Cy3  
 Secondary Antibody Concentration: 1:200  
 Magnification: 20X  
 Exposure Time: 0.5–2.0 sec